

ʔew'ené

Translated by Regina Lennie and Evelyn Shae
Illustrations by Jen Walden

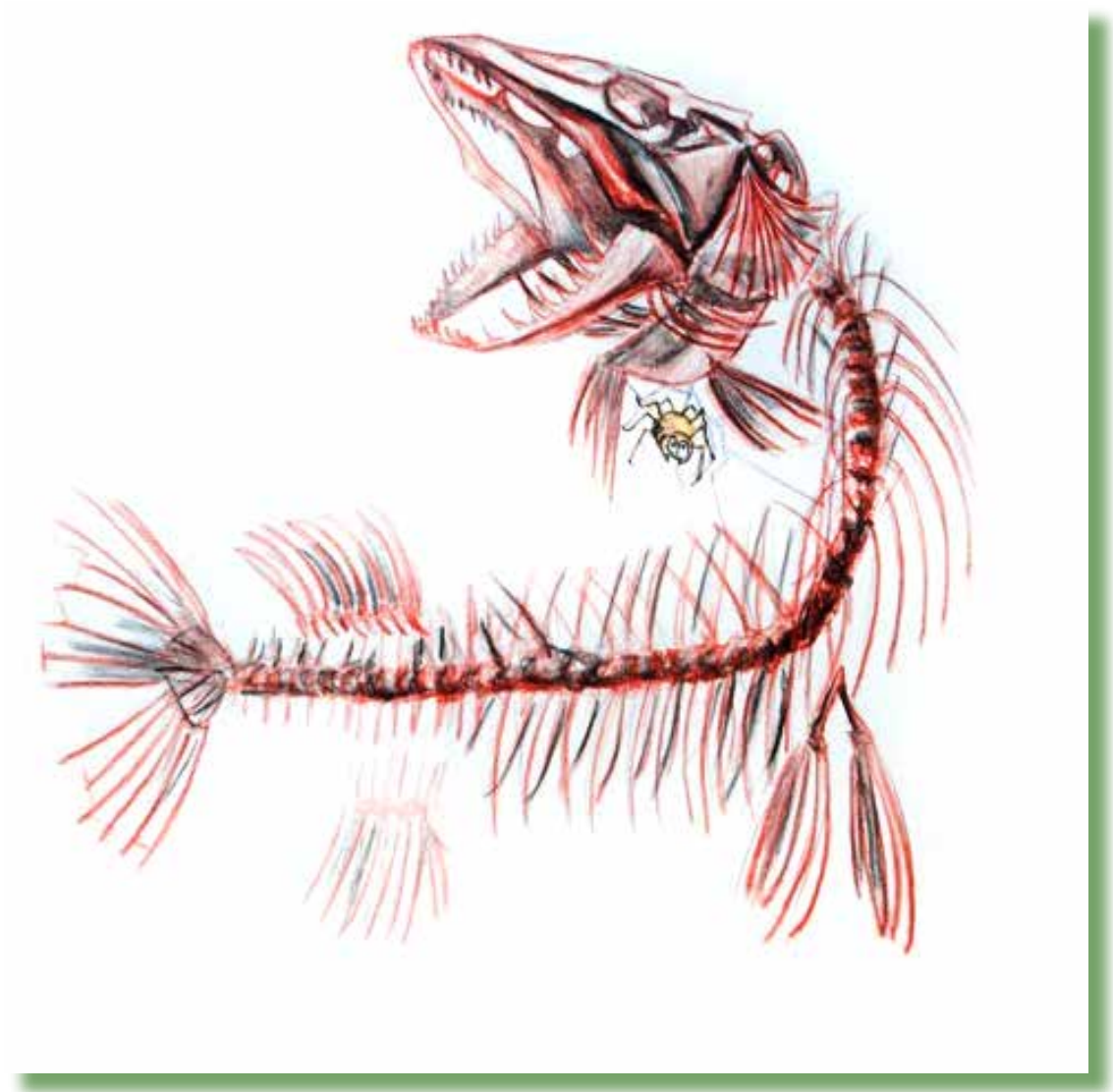


ᑭew'enè



Government of | Gouvernement des
Northwest Territories
Territoires du Nord-Ouest

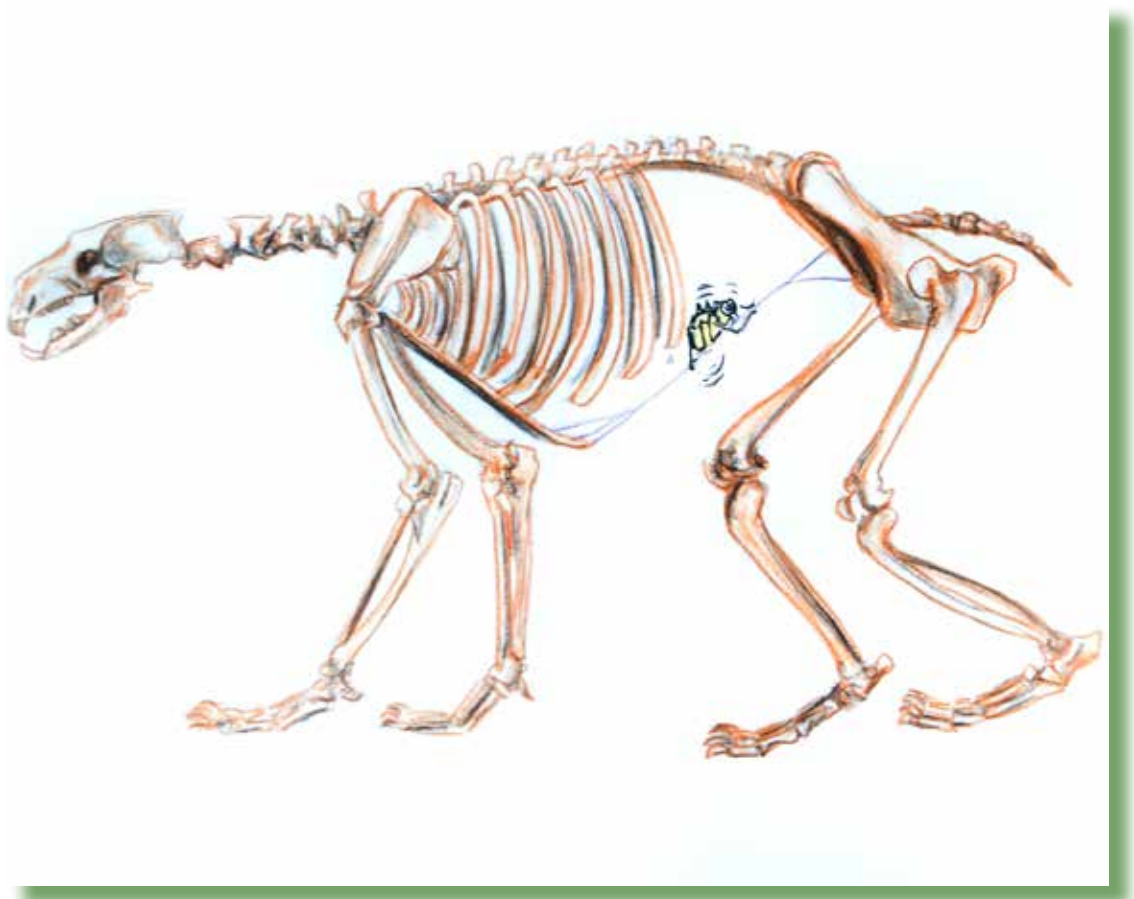
ᑭᑦᑲᑦᑲᑦ ᑭᑦᑲᑦᑲᑦ
ᑲᑦᑲᑦᑲᑦ ᑭᑦᑲᑦᑲᑦ?





ʔederi luge
w'ené ʔahęt'e.

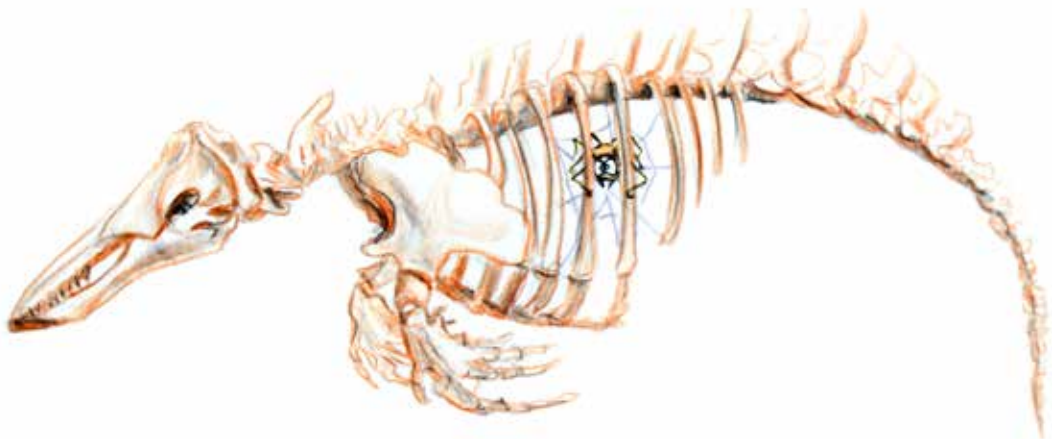
Ƴederi Ƴayeri
w'ené Ƴahęt'e?





ᑭederi tehzá w'ené
ᑭahęt'e.

ᑭederi ᑭayeri w'ené ᑭahęt'e?





Ƴederi lugesho
w'ené Ƴahęt'e.

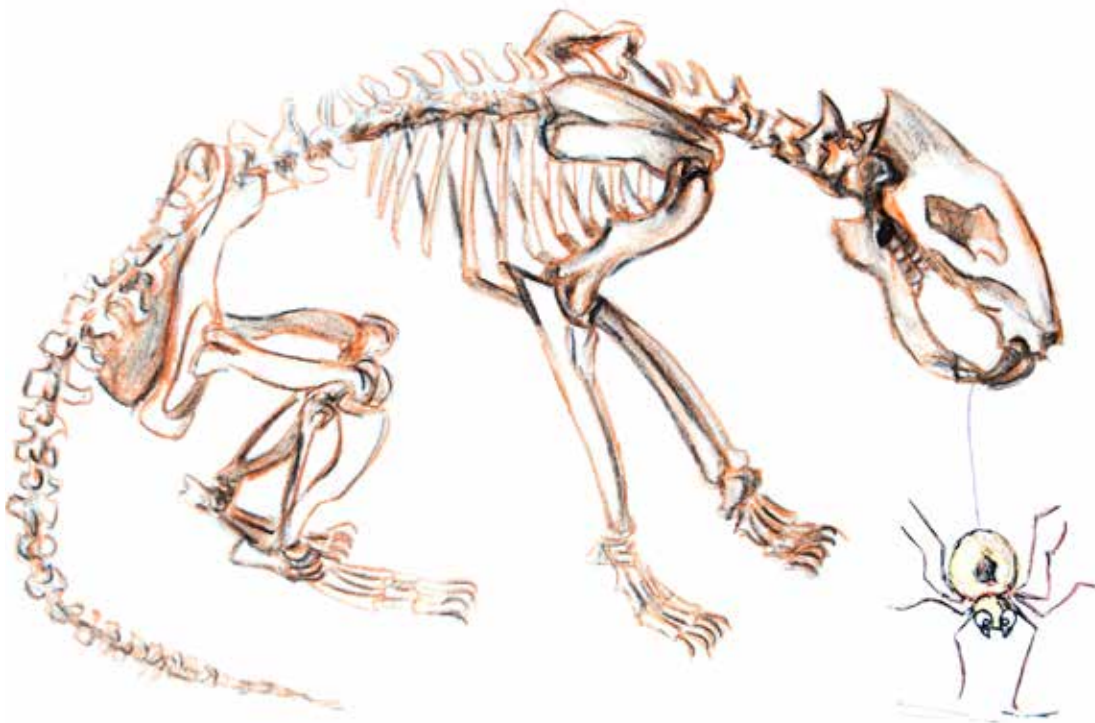
ᑭederi ᑭayeri w'ené ᑭahęt'e?





ʔederi ʔədə
w'ene ʔahet'e.

ᑭederi ᑭayeri
w'ené ᑭahęt'e?





ʔederi sá w'ené
ʔahęt'e.

ᑭederi ᑭayeri
w'ené ᑭahet'e?





ʔederi tasó w'ené
ʔahet'e.

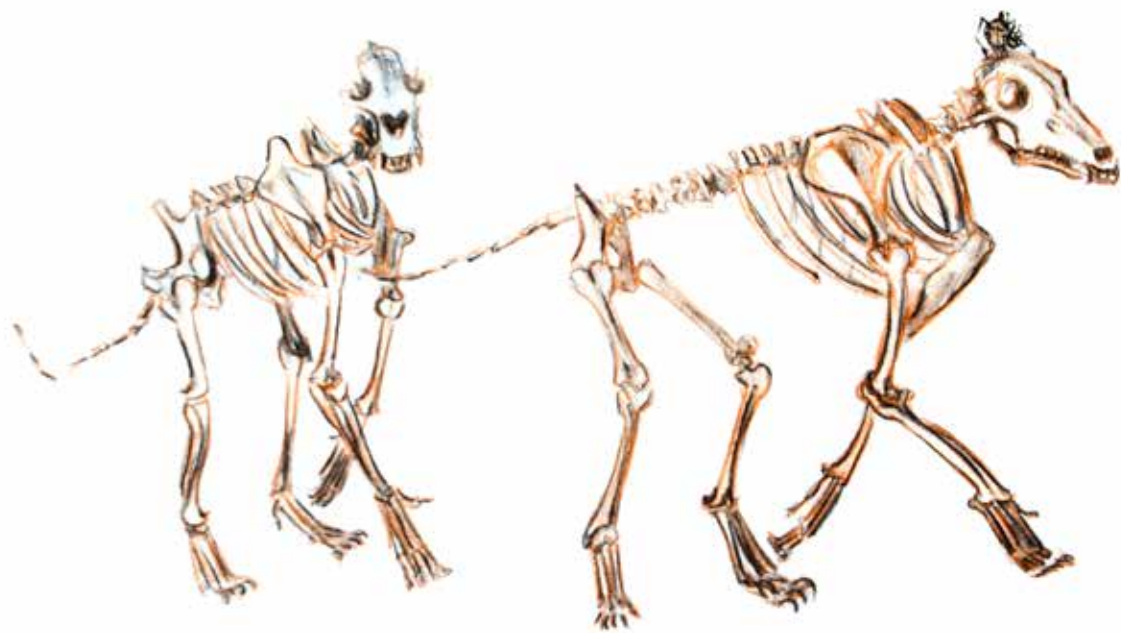
ᑭᑦᑲᑦᑲᑦ ᑭᑦᑲᑦᑲᑦ ᑲᑦᑲᑦᑲᑦ ᑭᑦᑲᑦᑲᑦ?





ʔederi dlq
w'ené ʔahet'e.

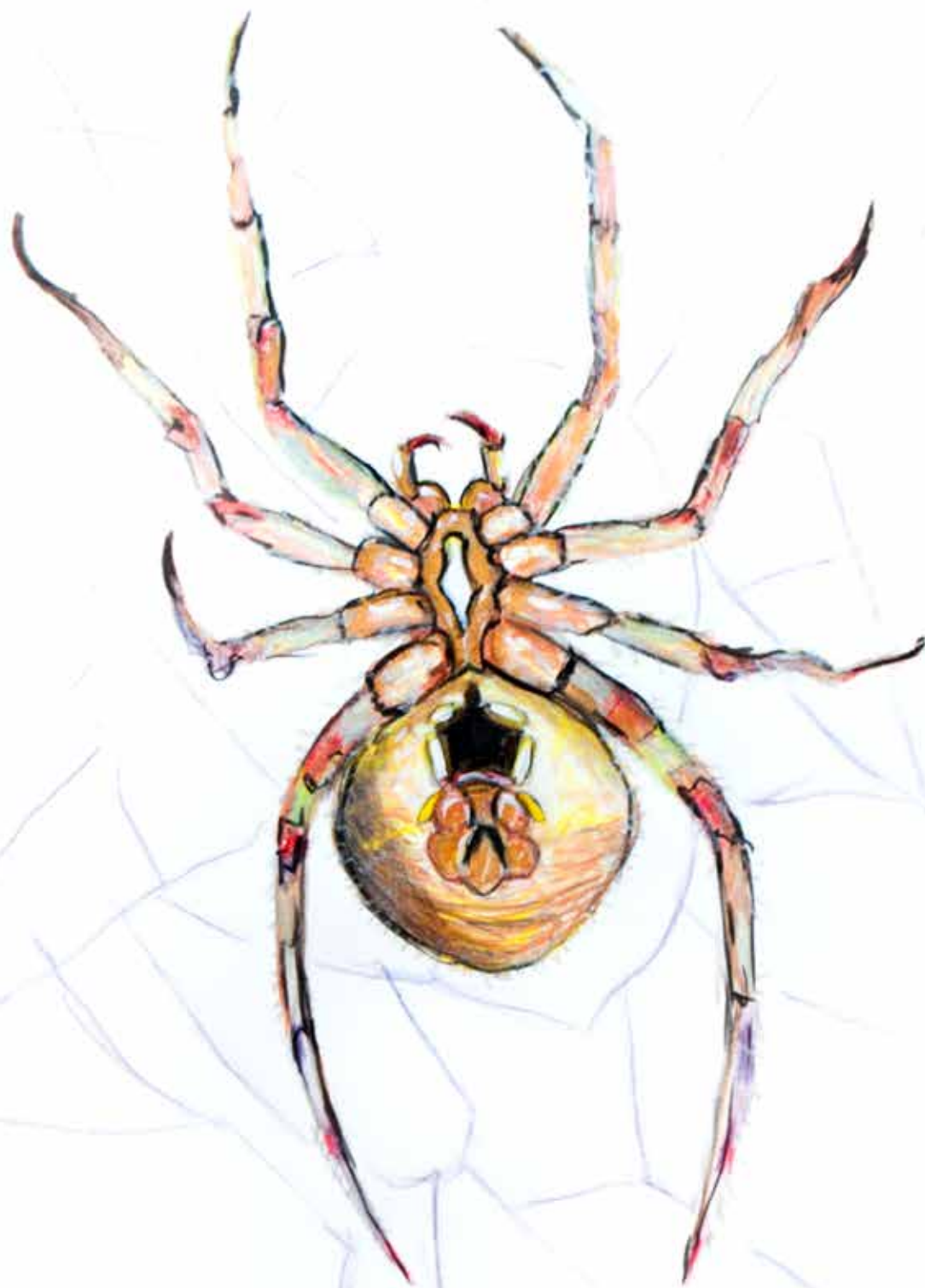
ᑭederi ᑭayeri
w'ené ᑭahęt'e?





ʔederi bele
w'ené ʔahęt'e.

Ƴayeri dú bew'ené
gǫlǫle?



Góhsə dú
bew'ené gqłje.

Ideas:

- For each page ask, (*Góhsə ʔənádi?*) Encourage the students to use prepositions of place words such as; on, inside, under, beside and body parts such as head, leg.
- An example of a full sentence would be, *The spider is on the vole's leg.*
- Ask students where the animals live. Answers to this question could be, *Fish live in the water.* or *The polar bear lives on the tundra.*
- Ask students which animal is the biggest? Or Which animal is black? Or What does a wolf eat?
- Ask students which animal is their favorite and why. Answers to this question could be, *I like the raven because it talks to me.* OR, *I like to eat caribou.*

All drawings by Jen Walden.
Adapted by Wendy Lahey from the book *Les Squelettes* by Kevin Polsello.
Translations by Regina Lennie and Evelyn Shae

Tessa Macintosh photos: spider web, raven
Paul Vesci photo: jackfish
GNWT – ENR photos: polar bear (Be41 Polar Bear –RWED),
beluga (RDecker), caribou (NWT2009-07-23DSC_0494),
vole (RB), wolf (Dean Cluff, Ellsmere,08Jul2010)
Beaver photo: <http://www.flickr.com/photos/31563480@N00/2452702213/>
American Beaver]