

Ep'ene

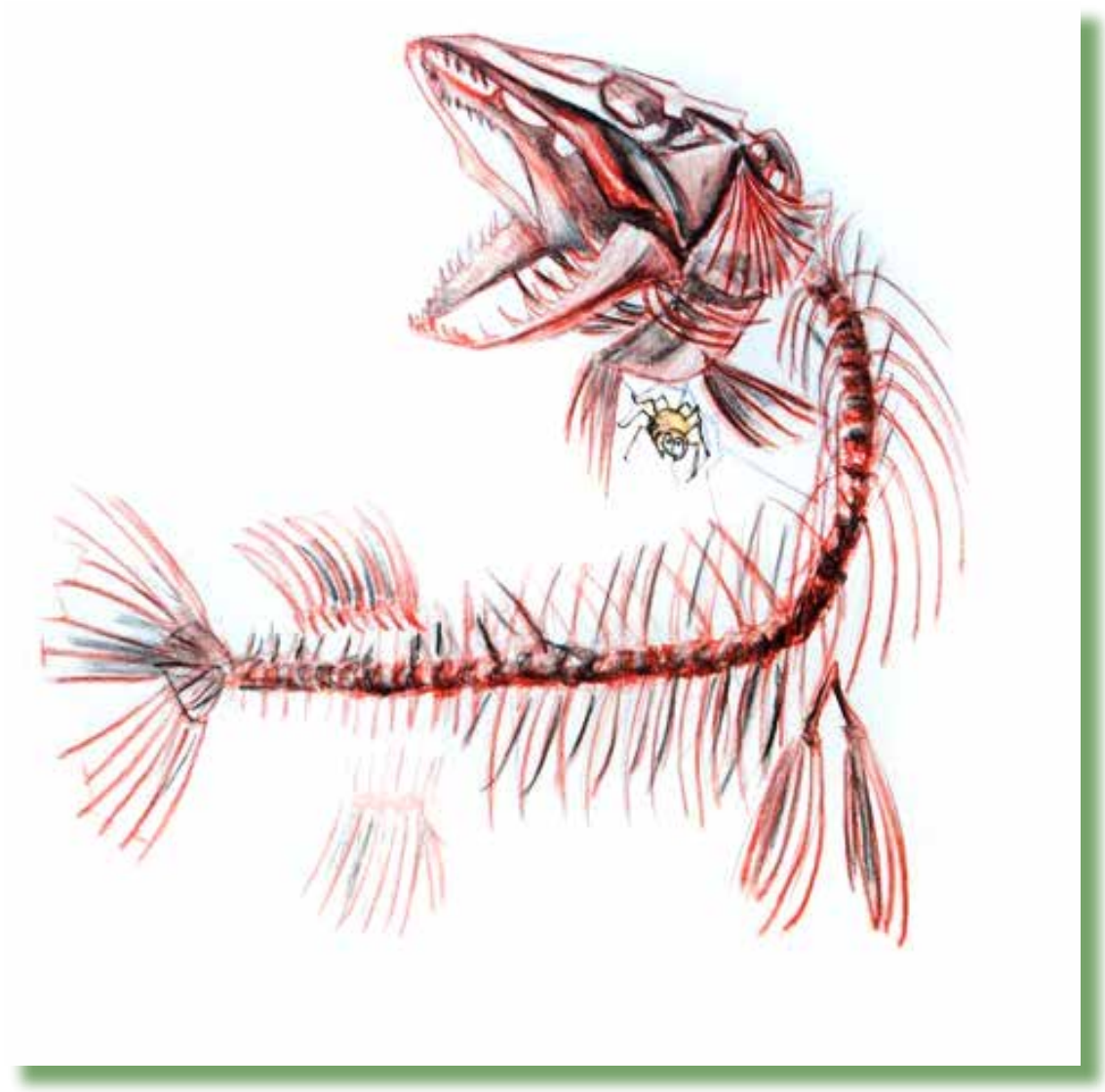
Jessie Campbell hé Rosemary Andrew sji t'etaitj
Jen Walden sji edijt'echu yerjte



Ep'ene



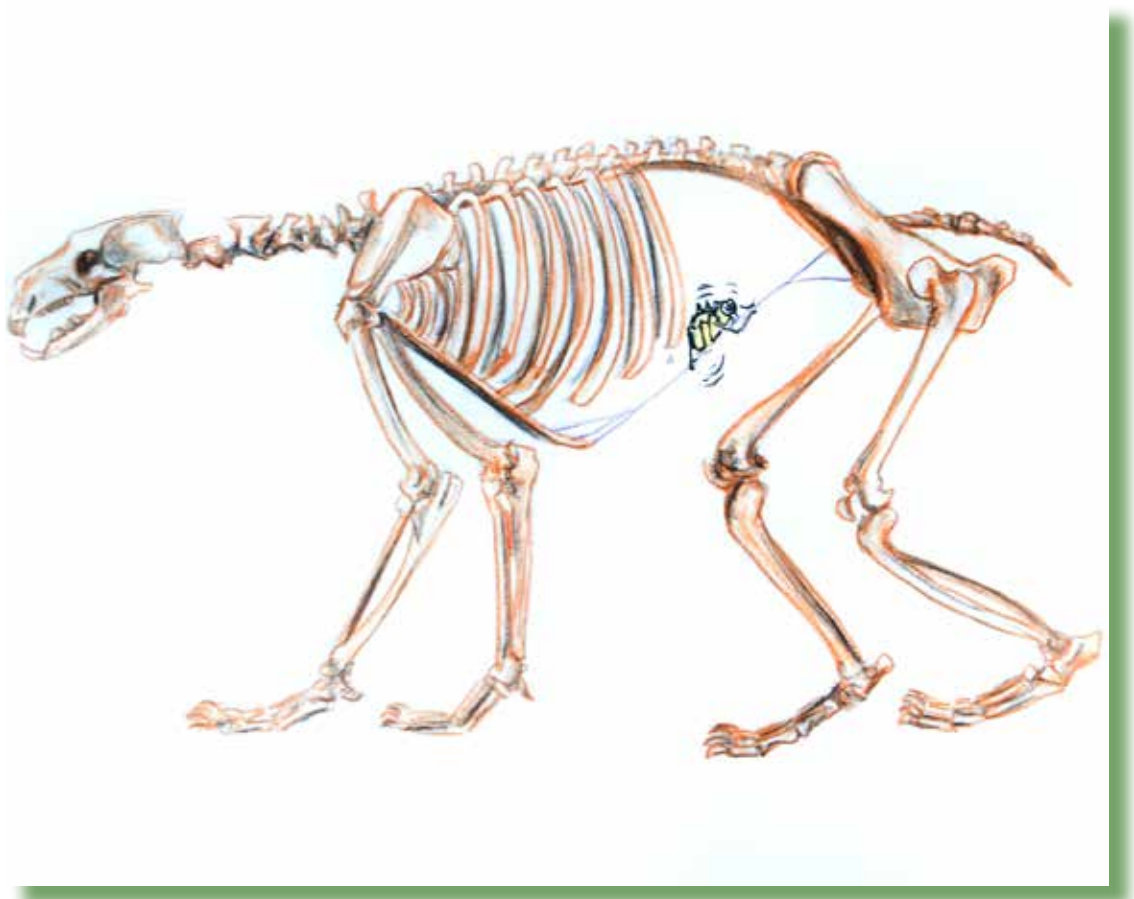
Ediri ayíí p'ęné ajt'e?





łué p'éné ait'e

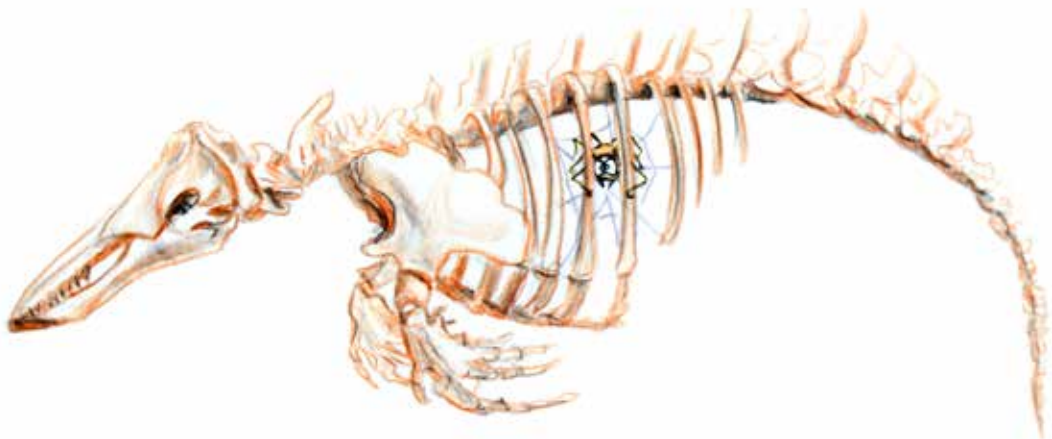
Ediri ayíí p'ęné ajt'e?





Tehza p'ęné ajt'e.

Ediri ayíí p'ęné ajt'e?





Łuecho p'ęné ajt'e.

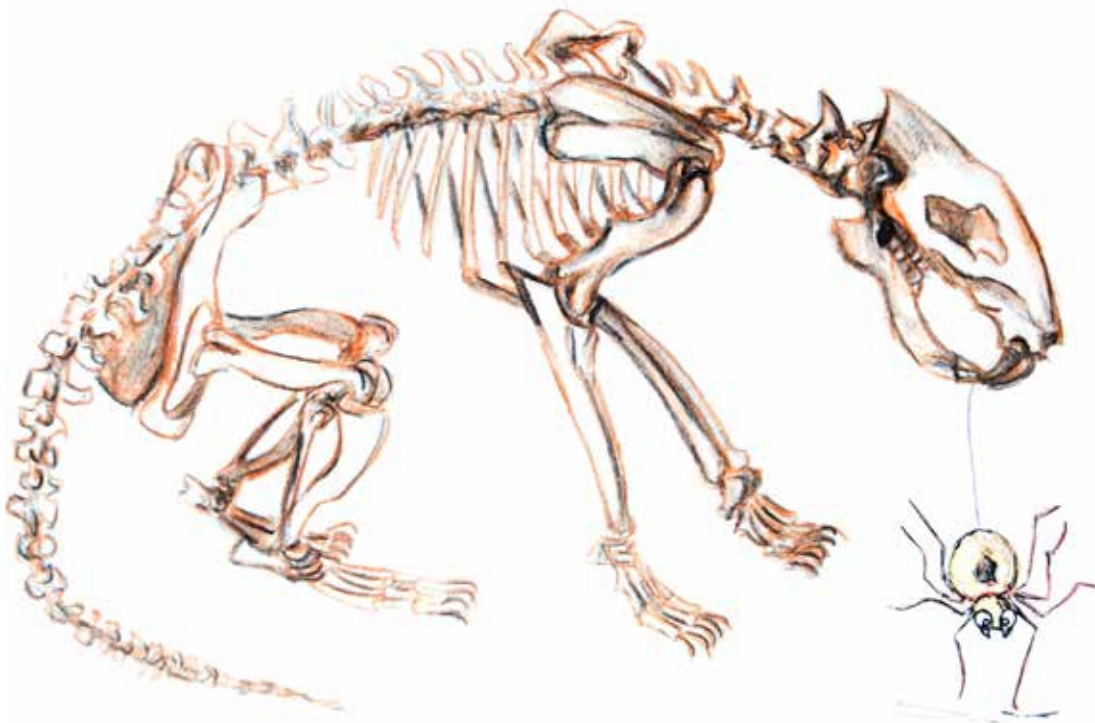
Ediri ayíí p'ęné ajt'e?





Epé p'ęné ajt'e.

Ediri ayíí p'ęné ajt'e?





Tsá p'ęné ajt'e

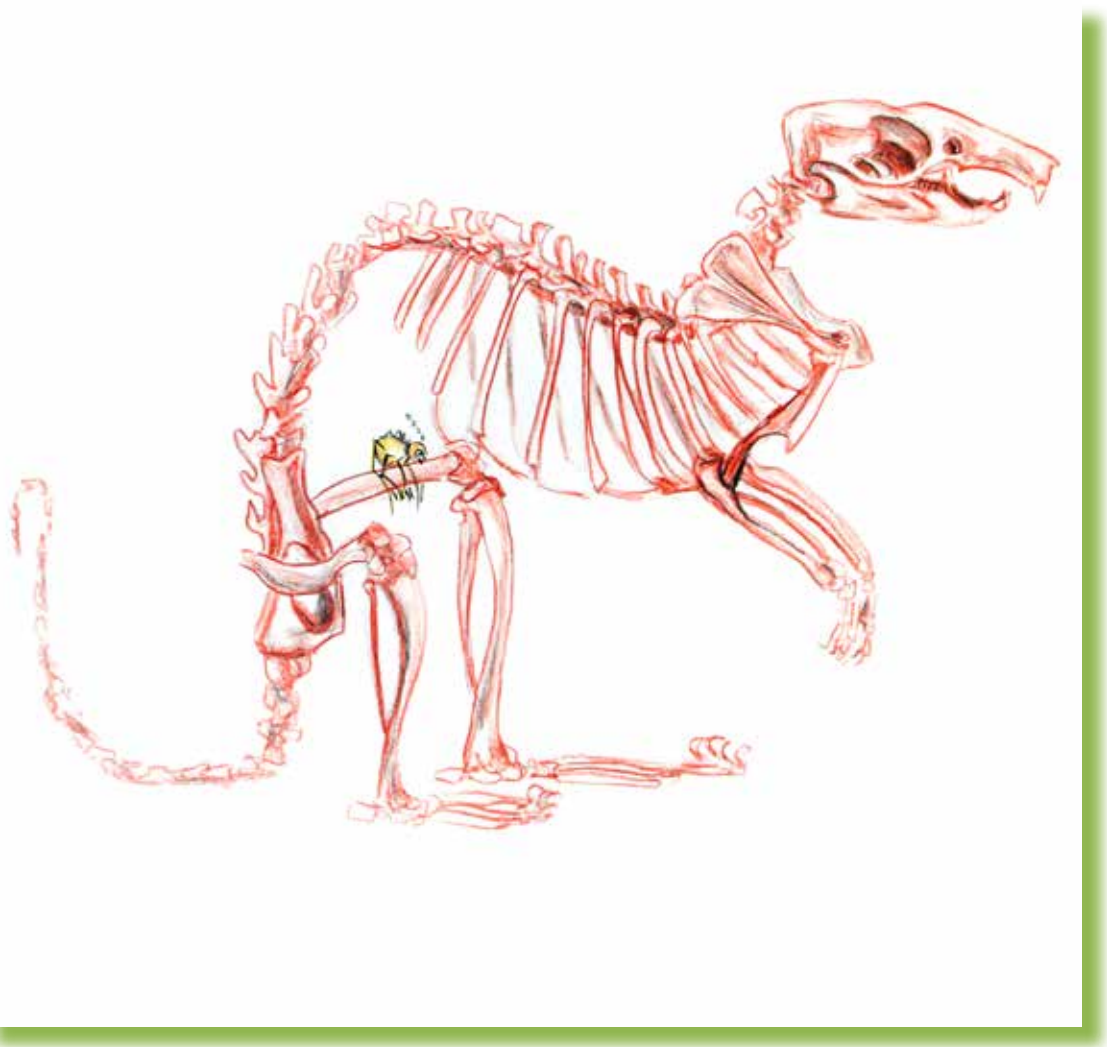
Ediri ayíí
p'ęné ajt'e?





Tátsq p'ęné ajt'e.

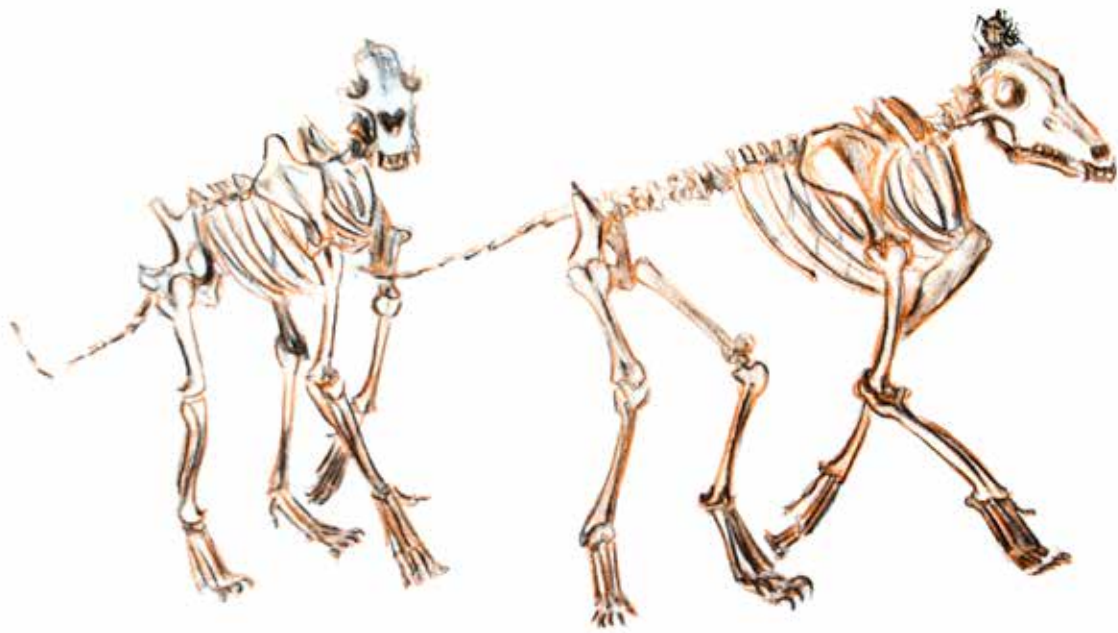
Ediri ayíí p'ęné ajt'e?





T'ehk'áe p'ené ajt'e.

Ediri ayíí p'ęné ajt'e?





Díga p'ęné ajt'e.

Ayíí epené
bets'ele.



Gotse epeṅe bets'ele.

Ideas:

- For each page ask, (*Gohitse laidí*) Encourage the students to use prepositions of place words such as; on, inside, under, beside and body parts such as head, leg.
- An example of a full sentence would be, *The spider is on the vole's leg.*
- Ask students where the animals live. Answers to this question could be, *Fish live in the water.* or *The polar bear lives on the tundra.*
- Ask students which animal is the biggest? Or Which animal is black? Or What does a wolf eat?
- Ask students which animal is their favorite and why. Answers to this question could be, *I like the raven because it talks to me.* OR, *I like to eat caribou.*

All drawings by Jen Walden.
Adapted by Wendy Lahey from the book *Les Squelettes* by Kevin Polsello.
Translations by Jessie Campbell.

Tessa Macintosh photos: spider web, raven
Paul Vesci photo: jackfish
GNWT – ENR photos: polar bear (Be41 Polar Bear –RWED),
beluga (RDecker), caribou (NWT2009-07-23DSC_0494),
vole (RB), wolf (Dean Cluff, Ellsmere,08Jul2010)
Beaver photo: <http://www.flickr.com/photos/31563480@N00/2452702213/>
American Beaver]