

Etth'éné

Translated by Violet Jumbo
Illustrations By Jen Walden





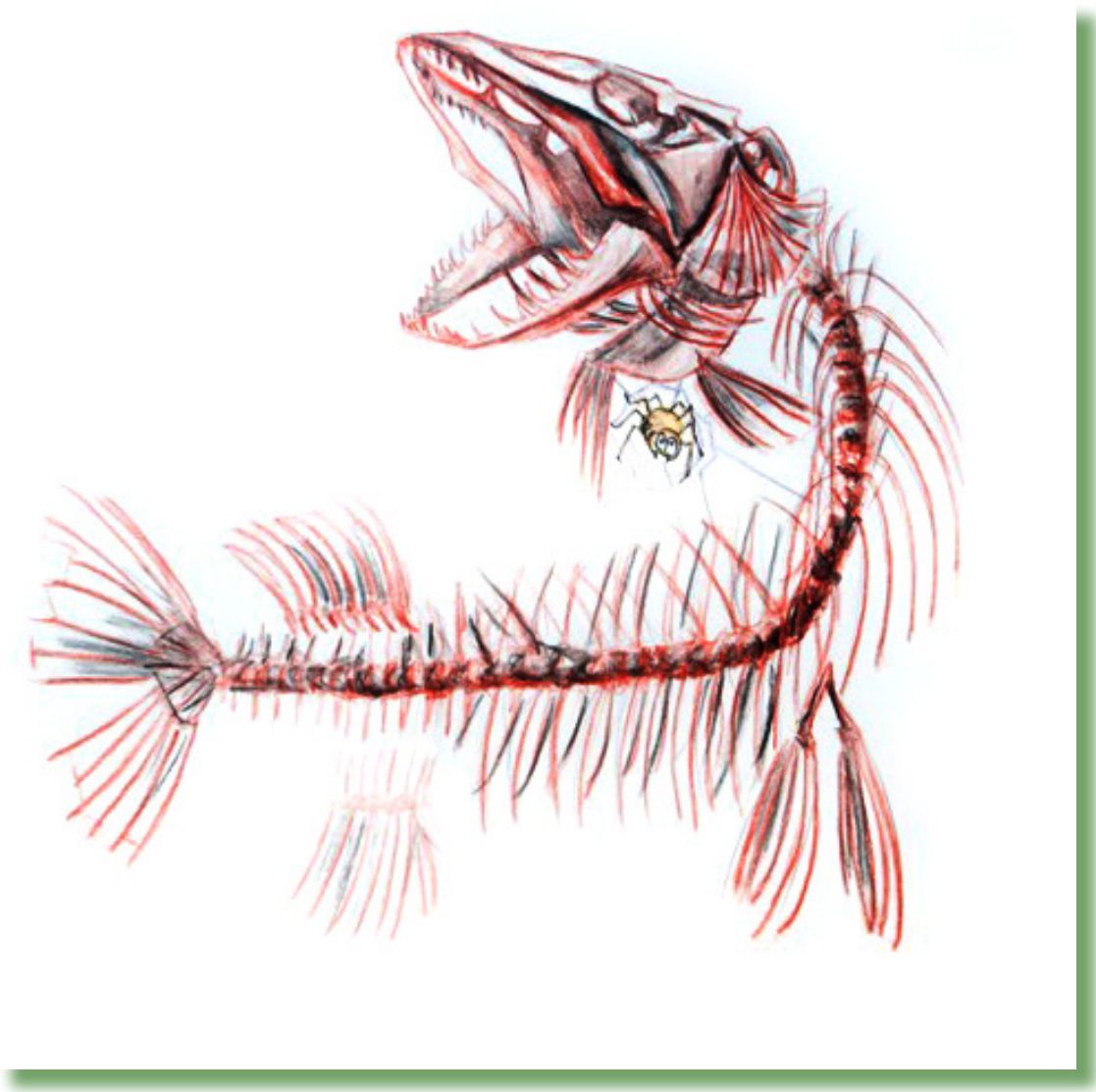
Etth'éné



Government of | Gouvernement des
Northwest Territories
Territoires du Nord-Ouest



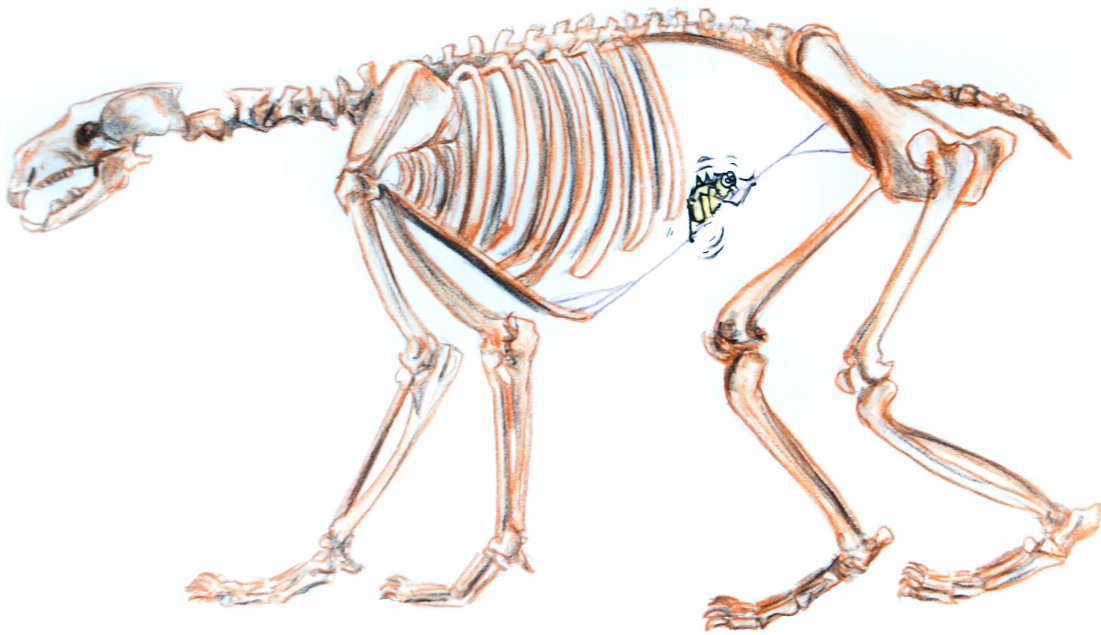
Edı amıı tth'ené ıt'e?






Edı tł'a
ꞑudaá tth'ené á qt'e.

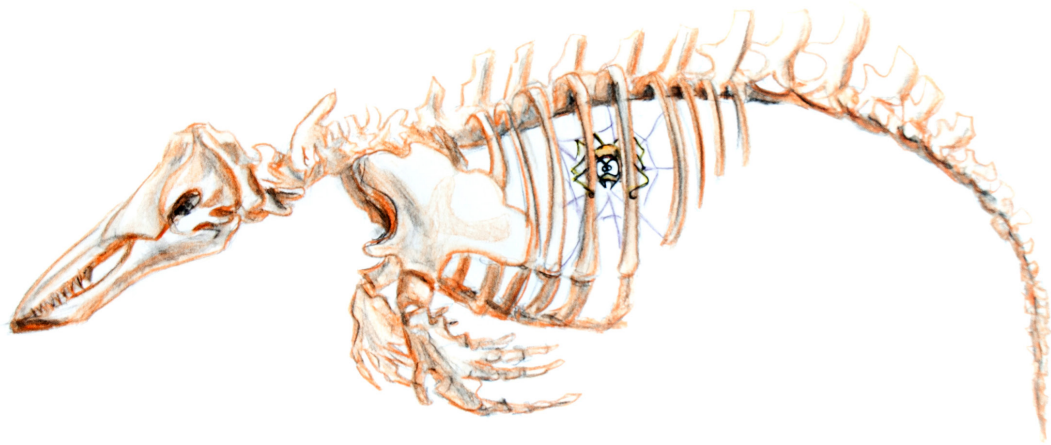
Edı amıı tth'ené ıt'e?





Edı tł'a sah dek'alı
tth'ené á qt'e.

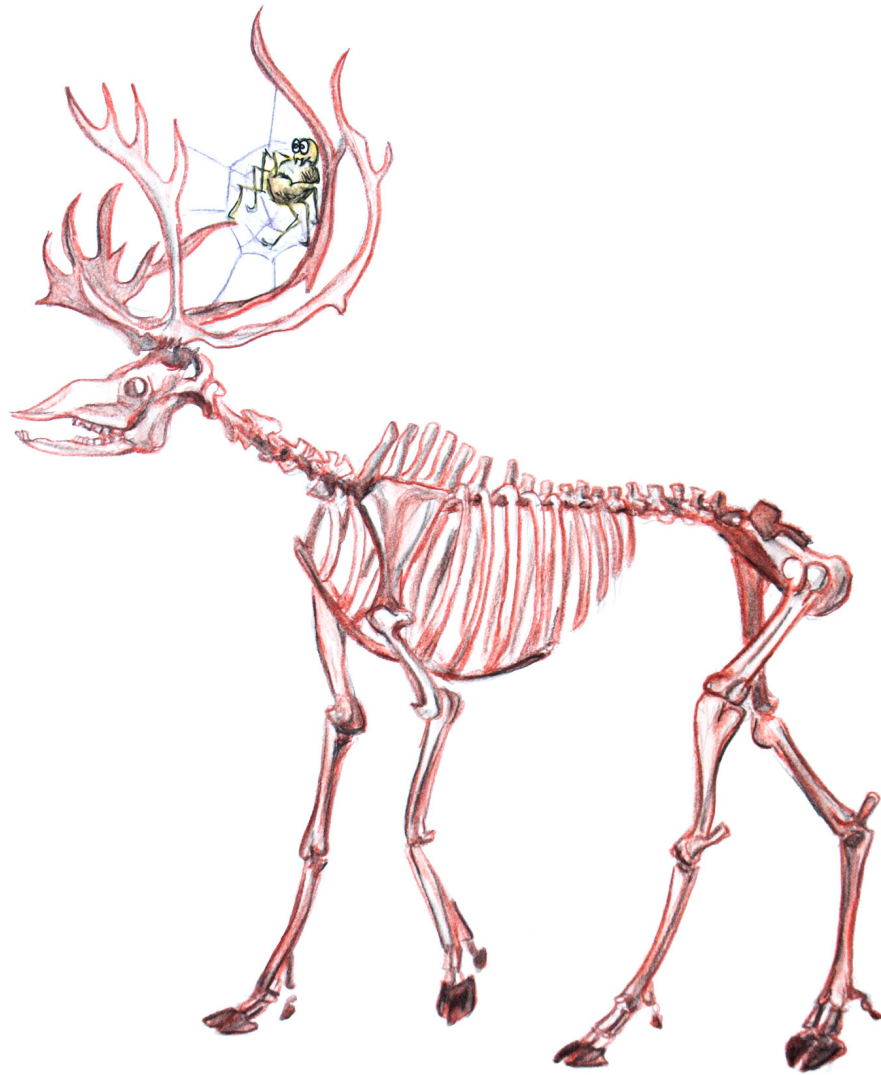
Edı amıı tth'ené ıt'e?





Edi t'l'a t'uecho
tth'ené á qt'e.

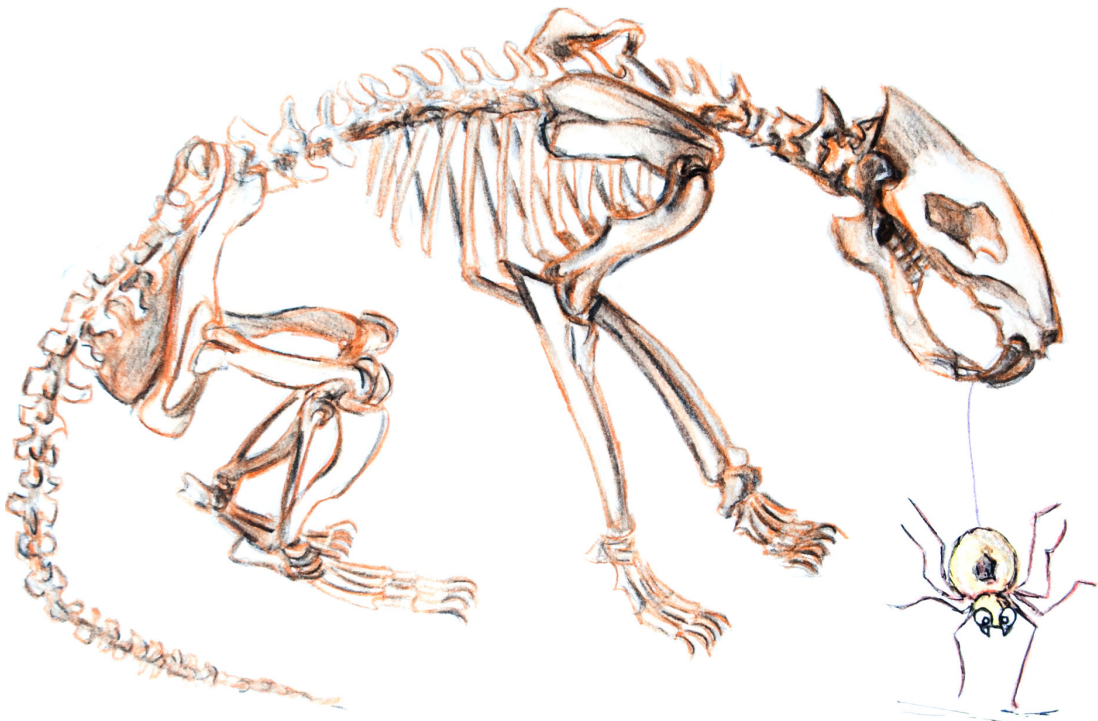
Edı amıı tth'ené ıt'e?





Edı tʼa medzih
tthʼené á qtʼe.

Edı amıı tth'ené ıt'e?





Edi tʼa tsá
tthʼené á ɔtʼe.

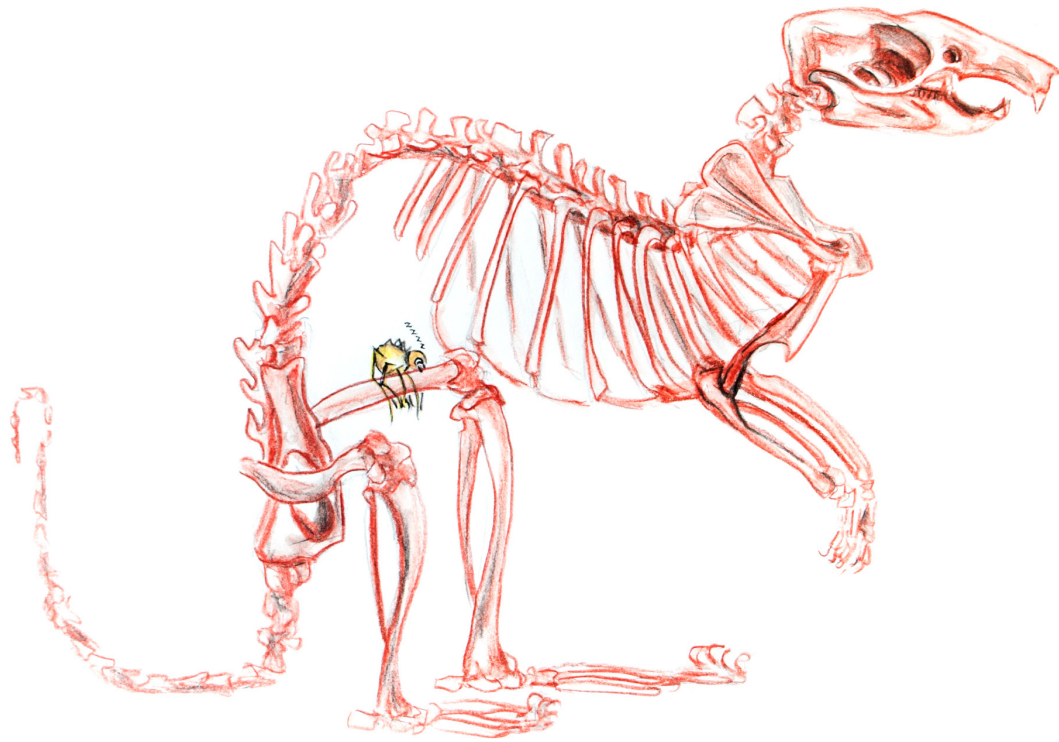
Edı amıı tth'ené ıt'e?





Edı tʼa ezhahe
tthʼené á qtʼe.

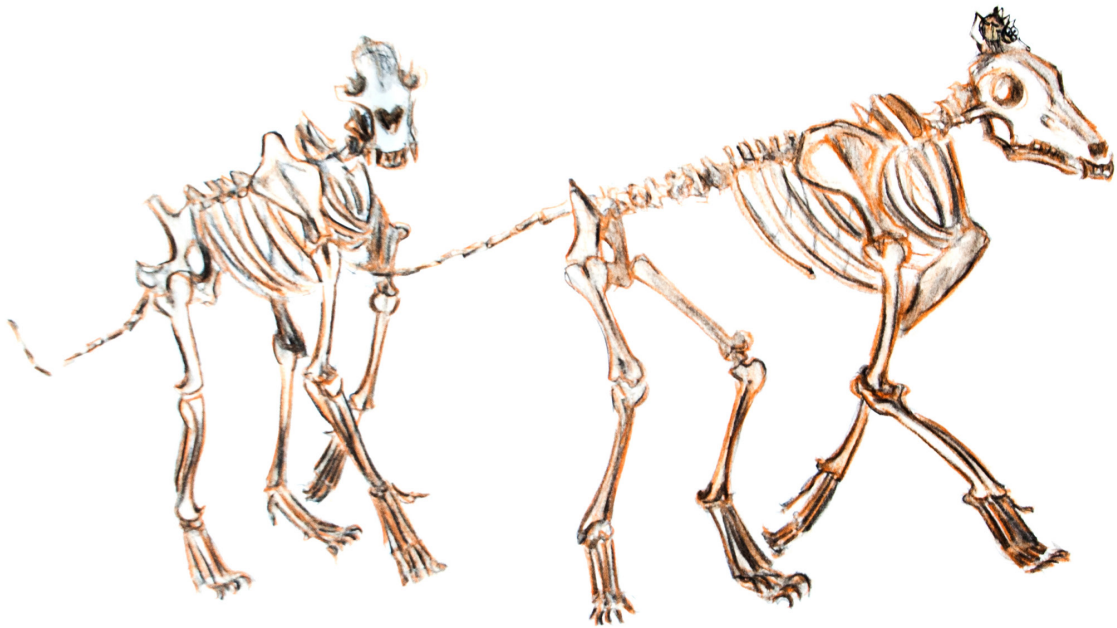
Edı amıı tth'ené ıt'e?





Edı tʼa dıya
tthʼené á qtʼe.

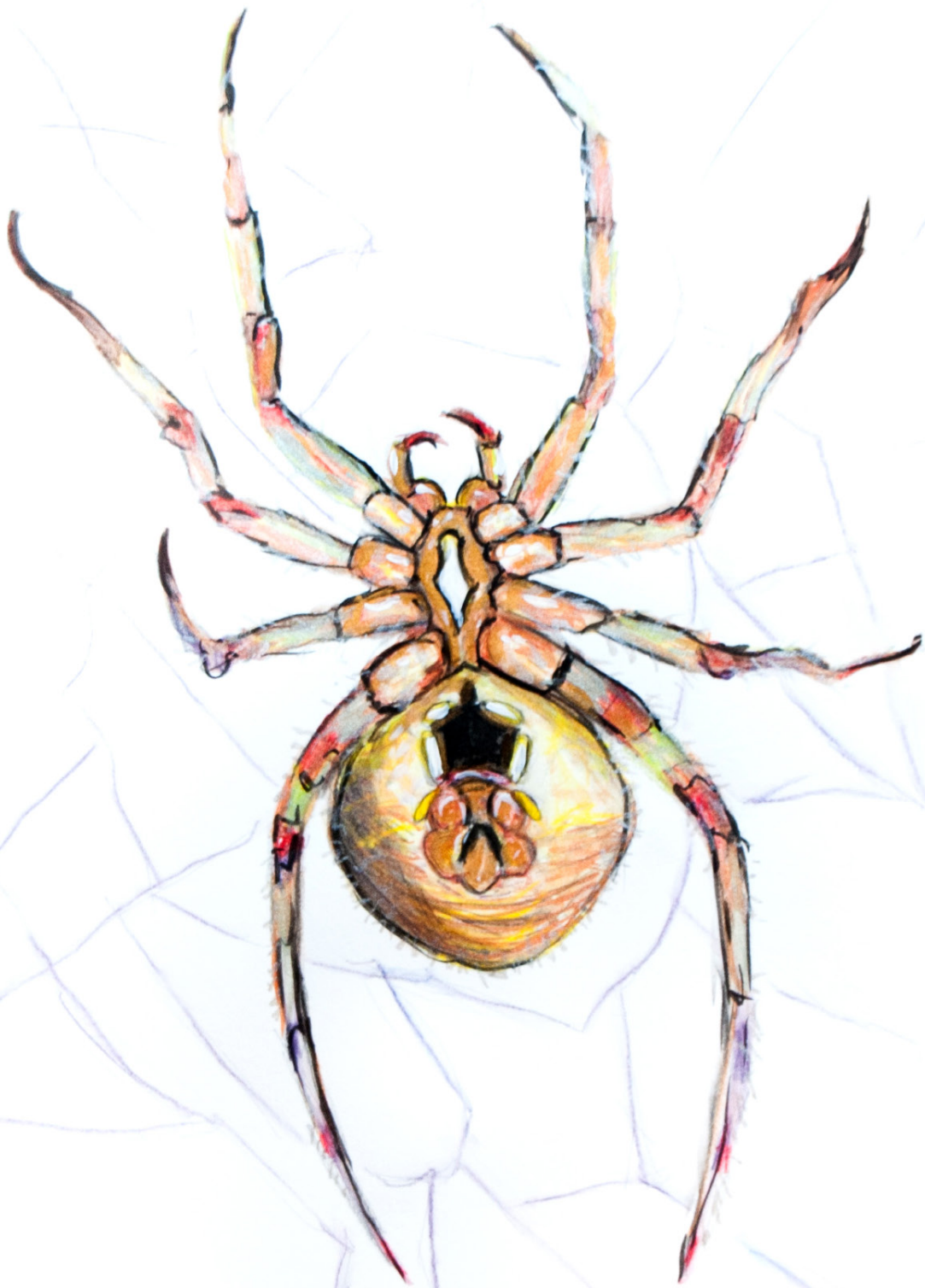
Edı amıı tth'ené ıt'e?





Edı tʼa dígahe
tthʼené á ɔtʼe.

Amí
metth'ené húle.



K'álée á metth'ené húle.

Ideas:

- For each page, ask students *'Where is the spider?'* Encourage the students to use placement words (e.g. on, inside, under) and body parts (e.g. head, leg). An example of a full sentence response would be: *'The spider is on the vole's leg.'*
- Ask students: *'Where do the animals live?'* Answers to this question could be: *'Fish live in water,'* or *'Polar bears live on tundra and on ice.'*
- Ask students: *'Which animals is the biggest?'* or *'Which animal is black?'* or *'What does a wolf eat?'*
- Ask students: *'Which animal is your favourite?'* and *'Why is it your favourite?'* Answers to these questions could be: *'I like the raven because it talks to me,'* or *'I like to eat caribou.'*

All drawings by Jen Walden.
Adapted by Wendy Lahey from the book *Les Squelettes* by Kevin Polsello.
Translations by Violet Jumbo.

Tessa Macintosh photos: spider web, raven
Paul Vesci photo: jackfish
GNWT – ENR photos: polar bear (Be41 Polar Bear –RWED),
beluga (RDecker), caribou (NWT2009-07-23DSC_0494),
vole (RB), wolf (Dean Cluff, Ellsmere,08Jul2010)
Steve Hersey photo: beaver (www.flickr.com/photos/sherseydc/2452702213/)

Government of | Gouvernement des
Northwest Territories
Territoires du Nord-Ouest