

# Etth'éné

Translated by Violet Jumbo  
Illustrations By Jen Walden





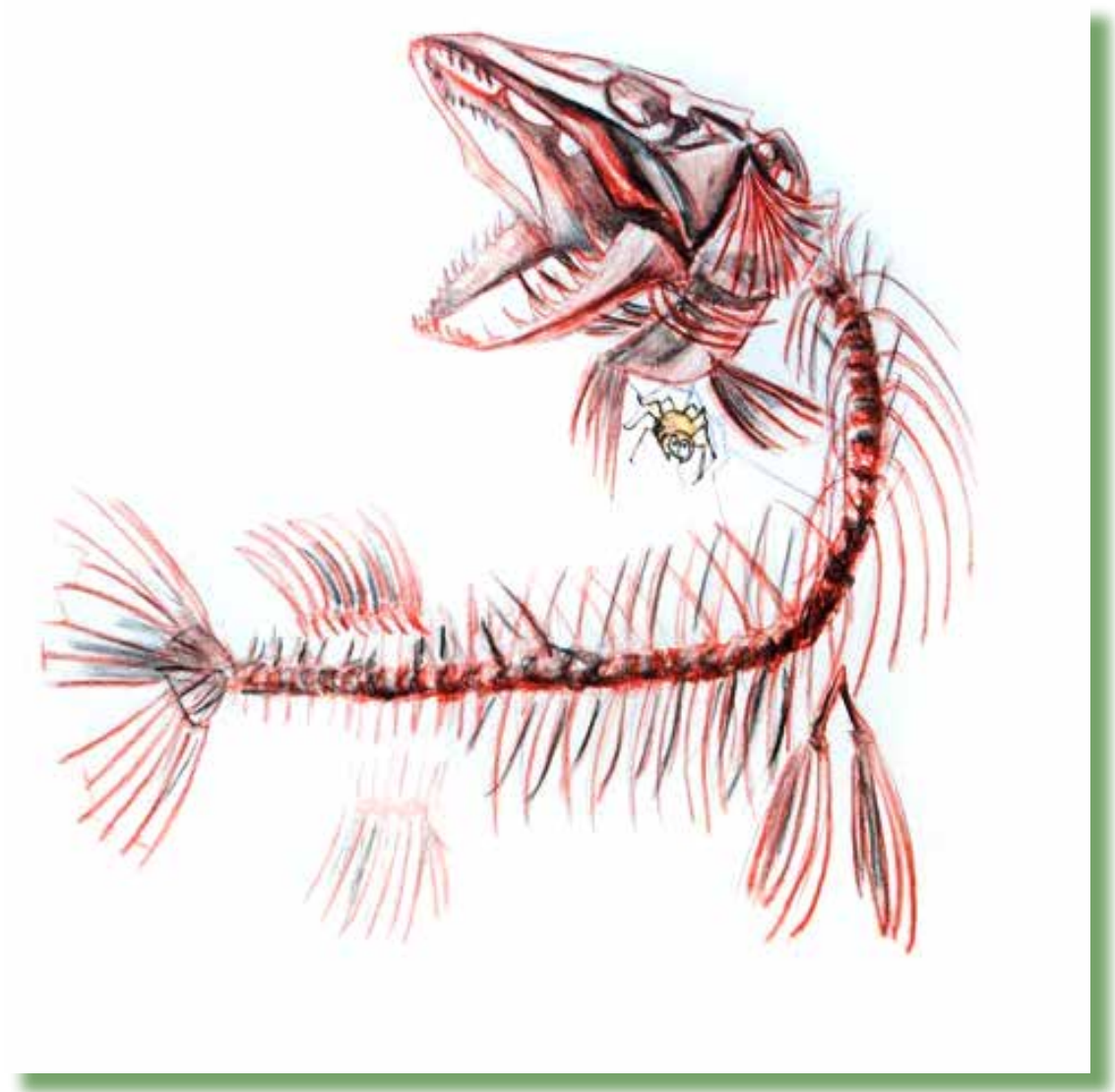
# Etth'éné



Government of | Gouvernement des  
Northwest Territories  
Territoires du Nord-Ouest



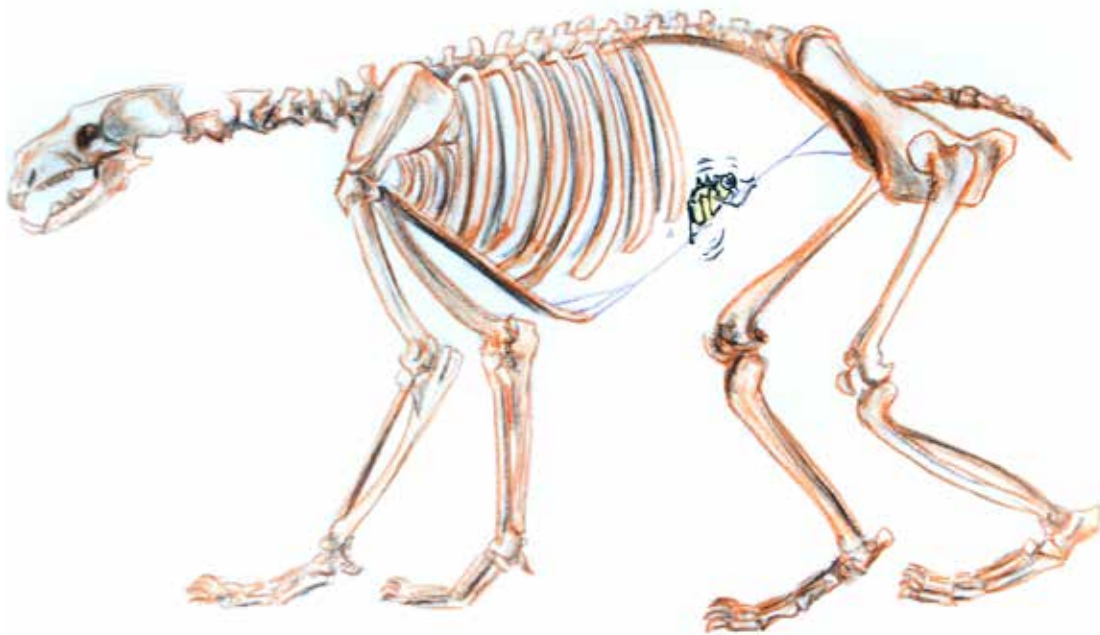
# Edi amí tth'ené qt'e?





Edi tʼa  
ʔudaá tthʼené á ʔtʼe.

Edi amí  
tth'ené qt'e?

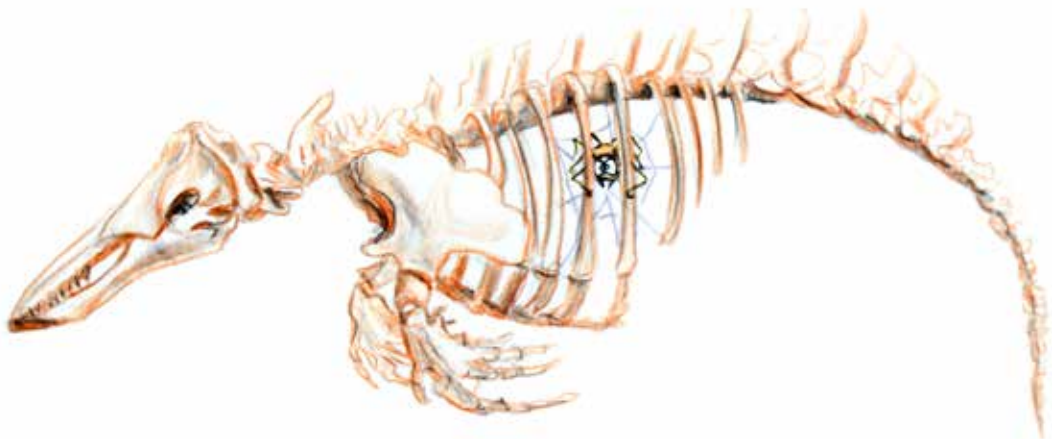




Edı tʻa sah dekʻalı  
tthʻené á ɔtʻe.



Edı amıı  
tth'ené qt'e?





Edi t'l'a t'uecho  
tth'ené á qt'e.

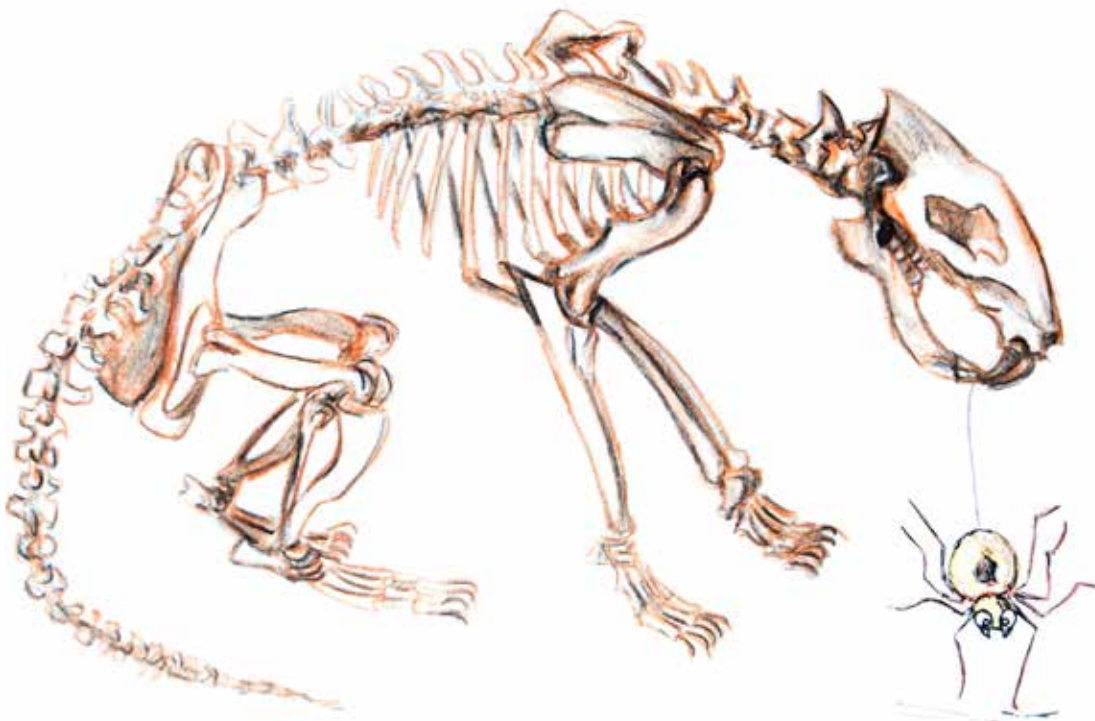
# Edı amıı tth'ené qt'e?





Edi tʼa medzih  
tthʼené á qtʼe.

Edı amıı  
tth'ené qt'e?





Edi tʼa tsá  
tthʼené á ɔtʼe.

Edı amıı  
tth'ené ıt'e?





Edi tʼa ezhahe  
tthʼené á ɔtʼe.



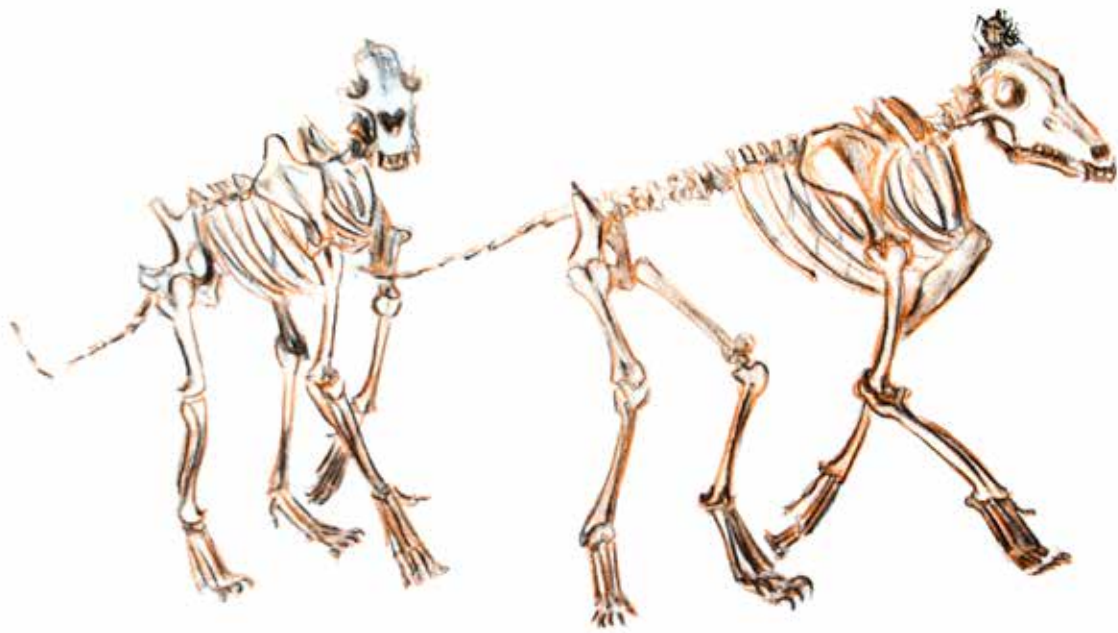
# Edı amıı tth'ené qt'e?





Edı t'á dıyá  
tth'ené á ıt'e.

Edı amıı  
tth'ené qt'e?





Edi tʼa dígahe  
tthʼené á qtʼe.

Amíi  
metth'ené húle.



K'álée á metth'ené húle.

# Ideas:

- For each page, ask students '*Where is the spider?*' Encourage the students to use placement words (e.g. on, inside, under) and body parts (e.g. head, leg). An example of a full sentence response would be: '*The spider is on the vole's leg.*'
- Ask students: '*Where do the animals live?*' Answers to this question could be: '*Fish live in water,*' or '*Polar bears live on tundra and on ice.*'
- Ask students: '*Which animals is the biggest?*' or '*Which animal is black?*' or '*What does a wolf eat?*'
- Ask students: '*Which animal is your favourite?*' and '*Why is it your favourite?*' Answers to these questions could be: '*I like the raven because it talks to me,*' or '*I like to eat caribou.*'

All drawings by Jen Walden.  
Adapted by Wendy Lahey from the book *Les Squelettes* by Kevin Polsello.  
Translations by Violet Jumbo.

Tessa Macintosh photos: spider web, raven  
Paul Vesci photo: jackfish  
GNWT – ENR photos: polar bear (Be41 Polar Bear –RWED),  
beluga (RDecker), caribou (NWT2009-07-23DSC\_0494),  
vole (RB), wolf (Dean Cluff, Ellsmere,08Jul2010)  
Steve Hersey photo: beaver ([www.flickr.com/photos/sherseydc/2452702213/](http://www.flickr.com/photos/sherseydc/2452702213/))