

Tth'ën

Eileen Beaver: Dene Dedlíne Yatı Eréht'ıs Taftı.
Jen Walden: Eréht'ıs t'a Eréht'ıs.

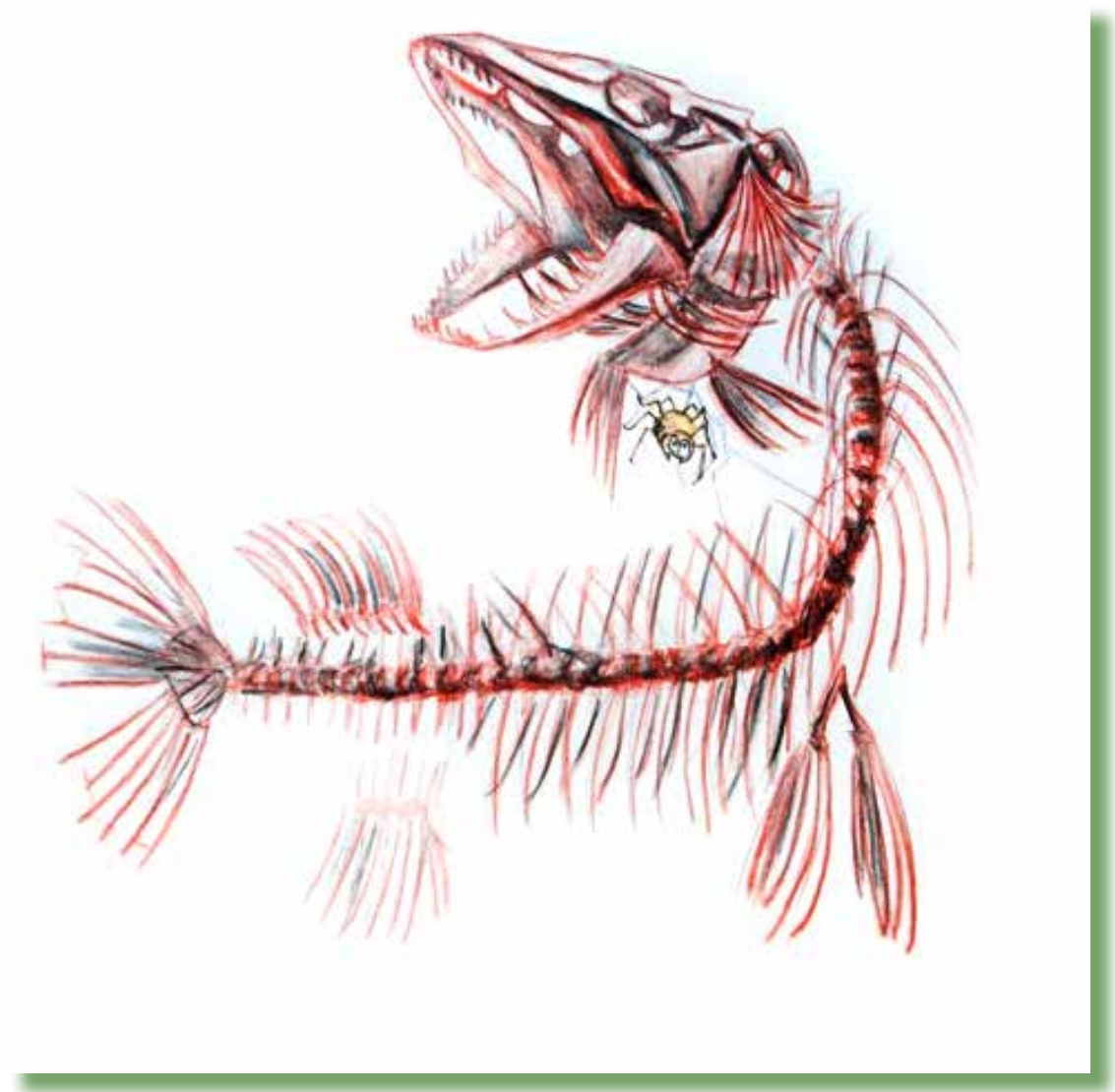


Tth'ën



Government of | Gouvernement des
Northwest Territories
Territoires du Nord-Ouest

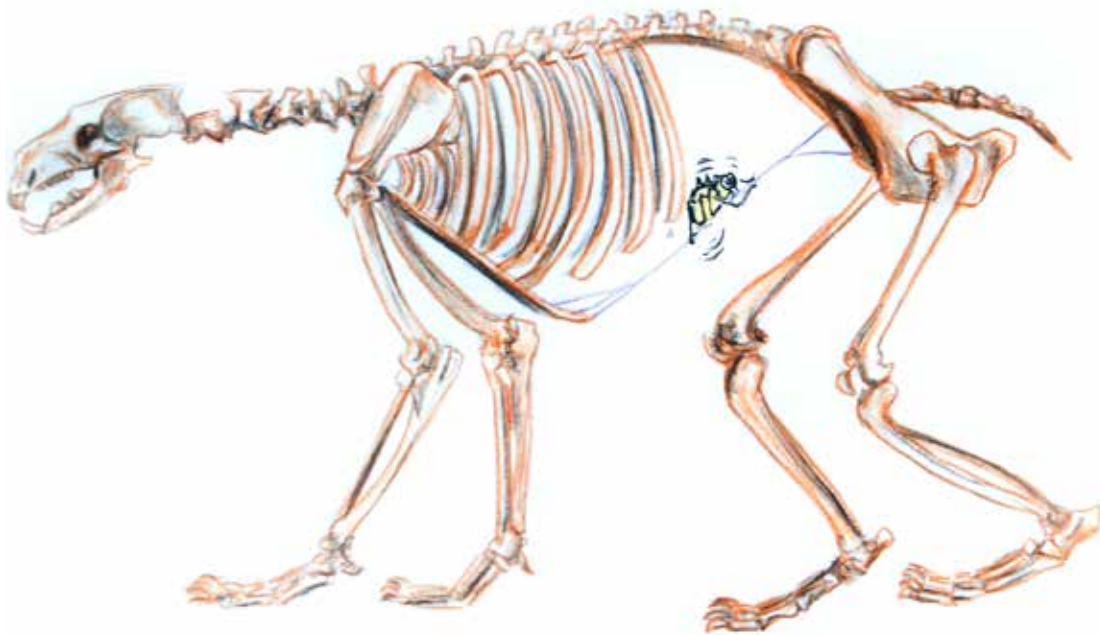
¿edlaḡhe tth'ën
¿at'e-a?





Diri ʔulday tth'ën ʔat'e.

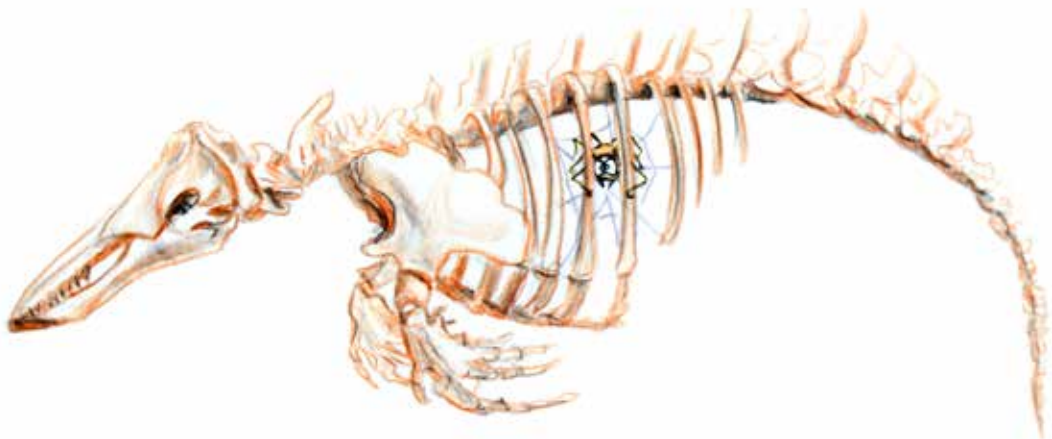
¿edlaḡhe tth'ën
¿at'e-a?





Diri sas delgáy
tth'ën ʔat'e.

ʔedlaḡhe tth'ën
ʔat'e-a?





Diri t̄uechoghe
tth'ën ʔat'e.

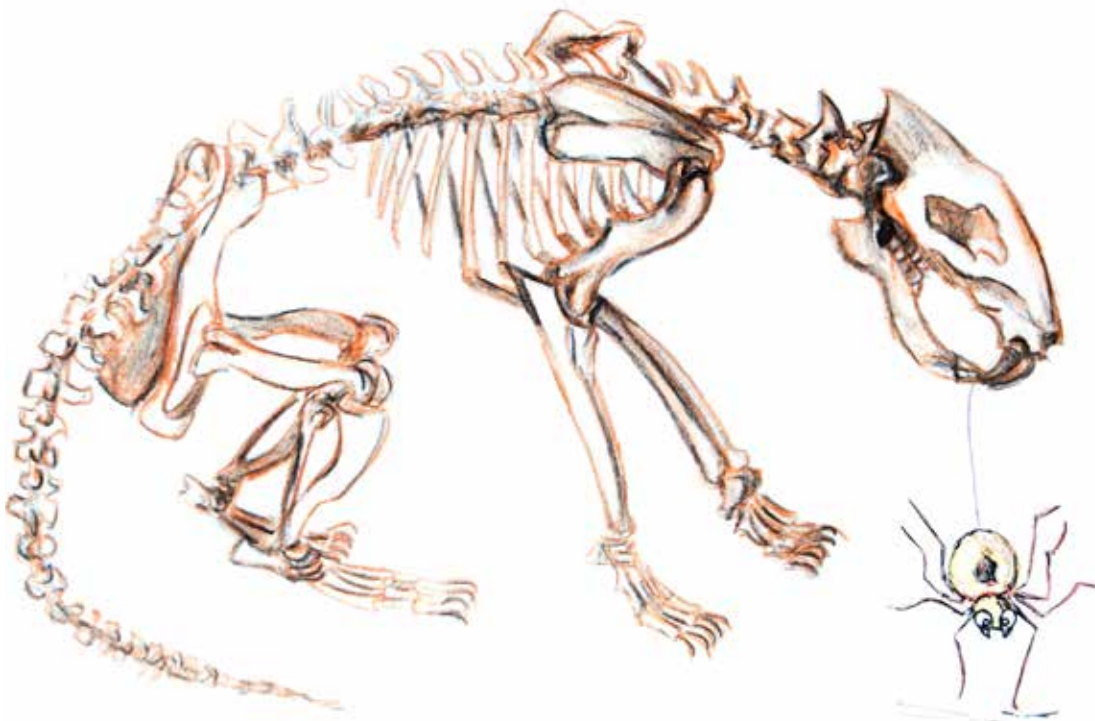
ʔedlaḡhe tth'ën
ʔat'e-a?





Diri ʔetthën tth'ën ʔat'e.

¿edlaghe tth'ën
¿at'e-a?





Diri tsá tth'ën ʔat'e.

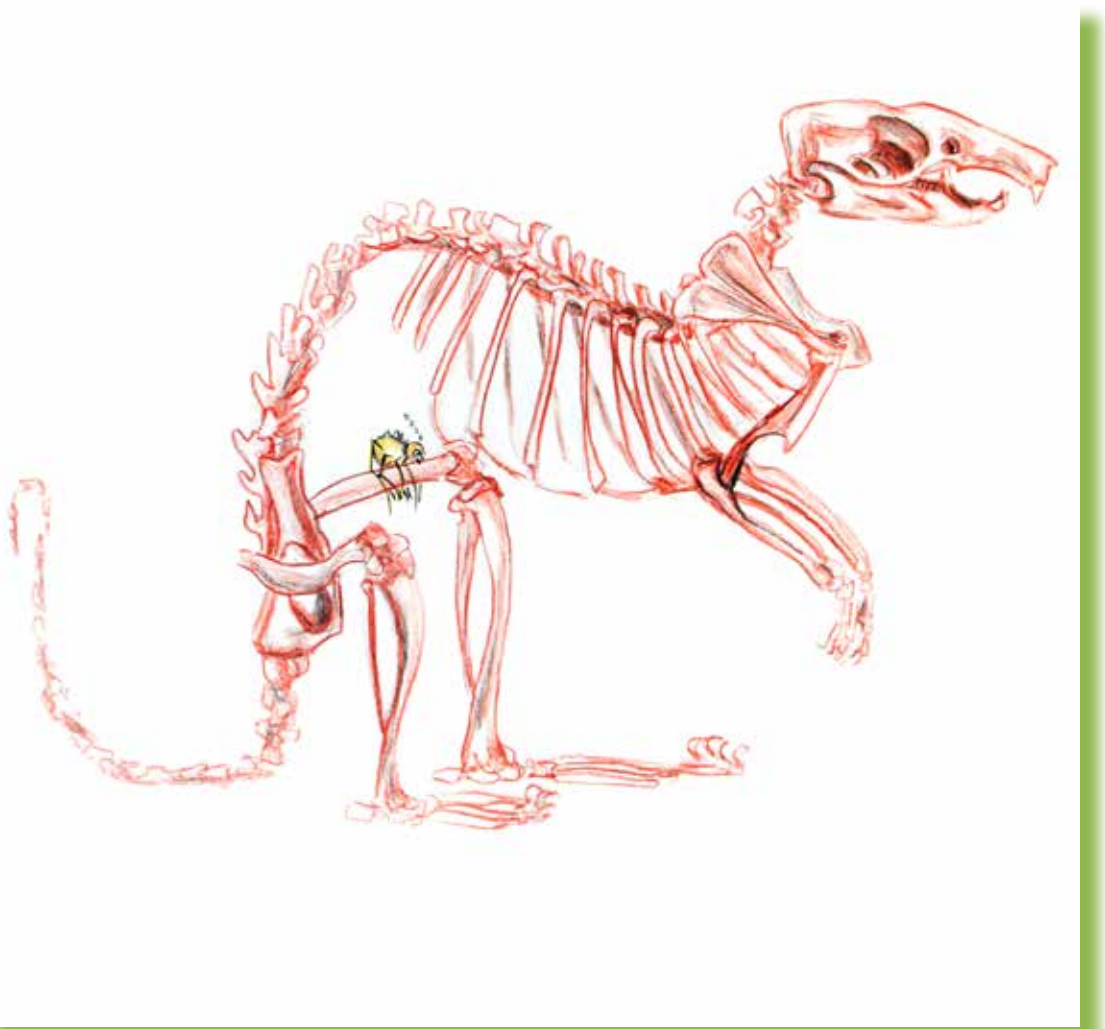
ʔedlaḡhe tth'ën
ʔat'e-a?





Diri datsá
tth'ën ʔat'e.

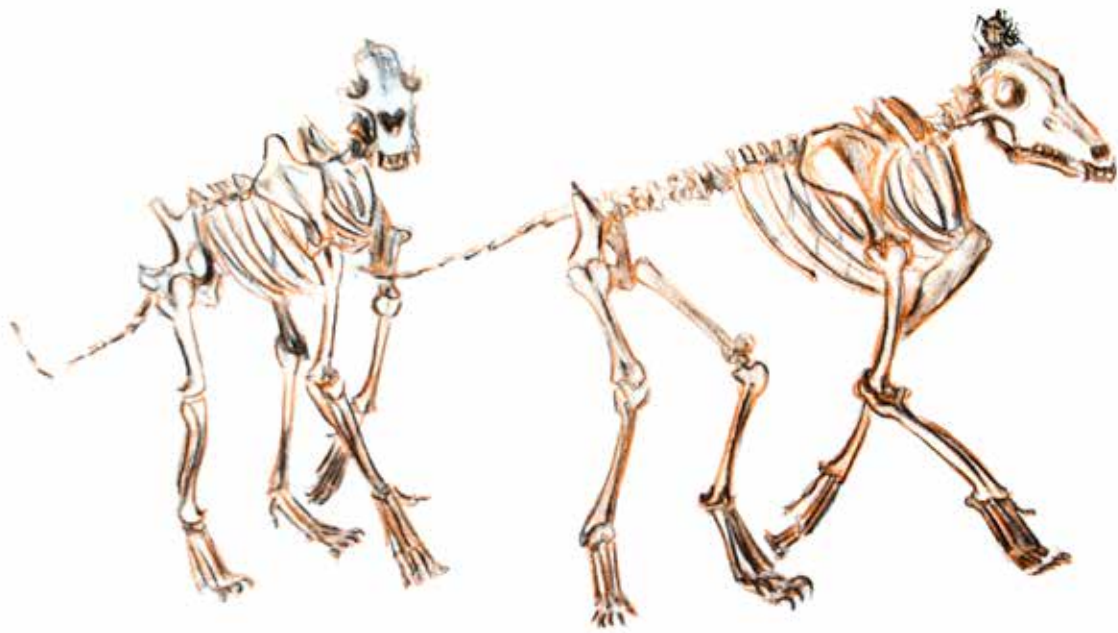
¿edlaghe tth'ën
¿at'e-a?





Diri dlúneaze
tth'ën ʔat'e.

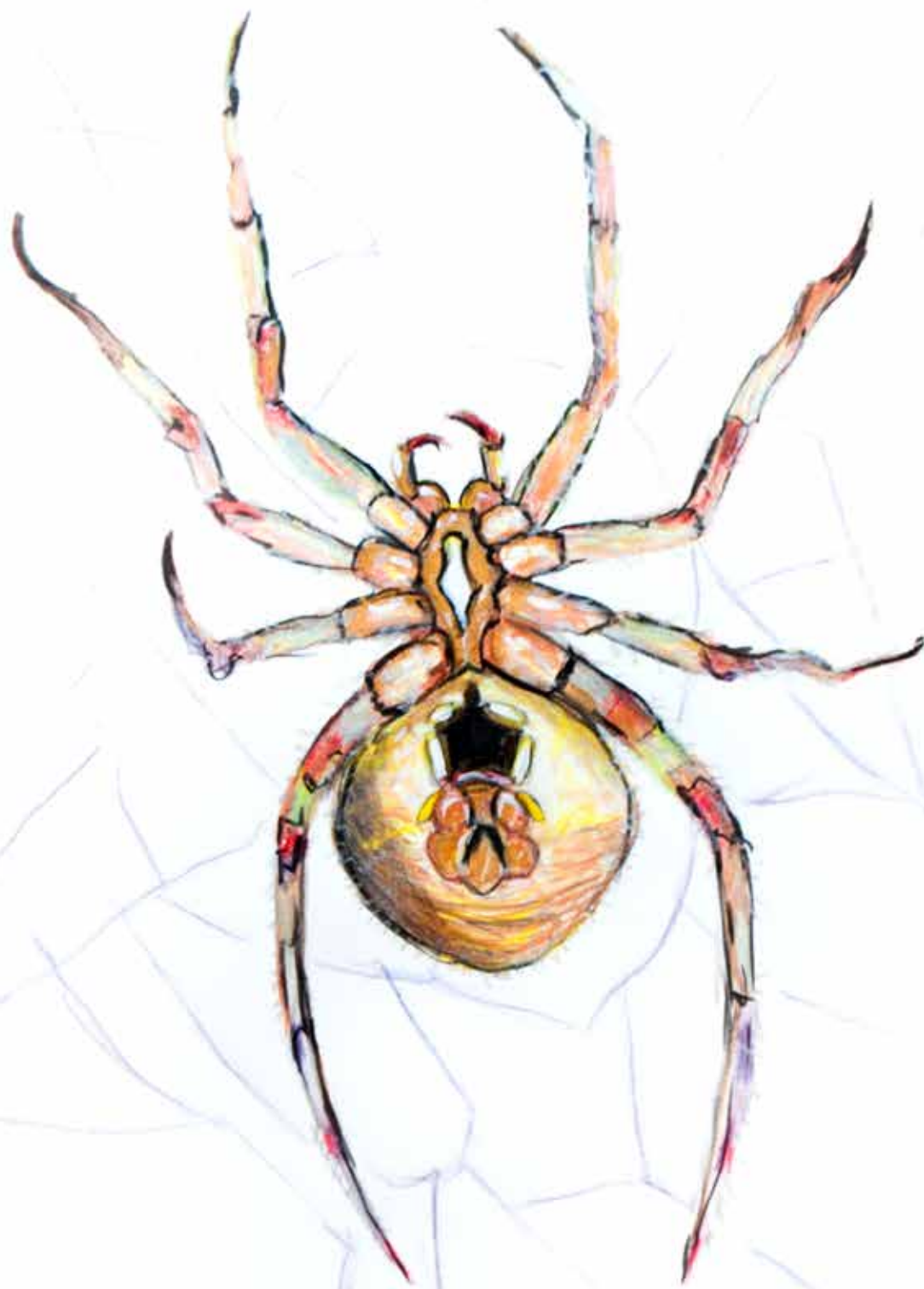
¿edlaghe tth'ën
¿at'e-a?





Diri nuniye tth'ën ʔat'e.

ʔedlaḡhe tth'ën
bets'ı ʔıle-a?



ʔuradzi tth'ën
bets'ı ʔile.

Ideas:

- For each page, ask students **ᑲᑦᑲᑦᑲᑦ ᑲᑦᑲᑦᑲᑦ ᑲᑦᑲᑦᑲᑦ?** (*'Where is the spider?'*) and encourage the students to use placement words (*e.g. on, inside, under*) and body parts (*e.g. head, leg*). An example of a full sentence response would be: *'The spider is on the vole's leg.'*
- Ask students: *'Where do the animals live?'* Answers to this question could be: *'Fish live in water,'* or *'Polar bears live on tundra and on ice.'*
- Ask students: *'Which animals is the biggest?'* or *'Which animal is black?'* or *'What does a wolf eat?'*
- Ask students: *'Which animal is your favourite?'* and *'Why is it your favourite?'* Answers to these questions could be: *'I like the raven because it talks to me,'* or *'I like to eat caribou.'*

All drawings by Jen Walden.
Adapted by Wendy Lahey from the book *Les Squelettes* by Kevin Polsello.
Translations by Eileen Beaver.

Tessa Macintosh photos: spider web, raven
Paul Vesci photo: jackfish
GNWT – ENR photos: polar bear (Be41 Polar Bear –RWED),
beluga (RDecker), caribou (NWT2009-07-23DSC_0494),
vole (RB), wolf (Dean Cluff, Ellsmere,08Jul2010)
Steve Hersey photo: beaver (www.flickr.com/photos/sherseydc/2452702213/)