

Ekw'òò

Jen Walden Enjht'èitsi whehtsı

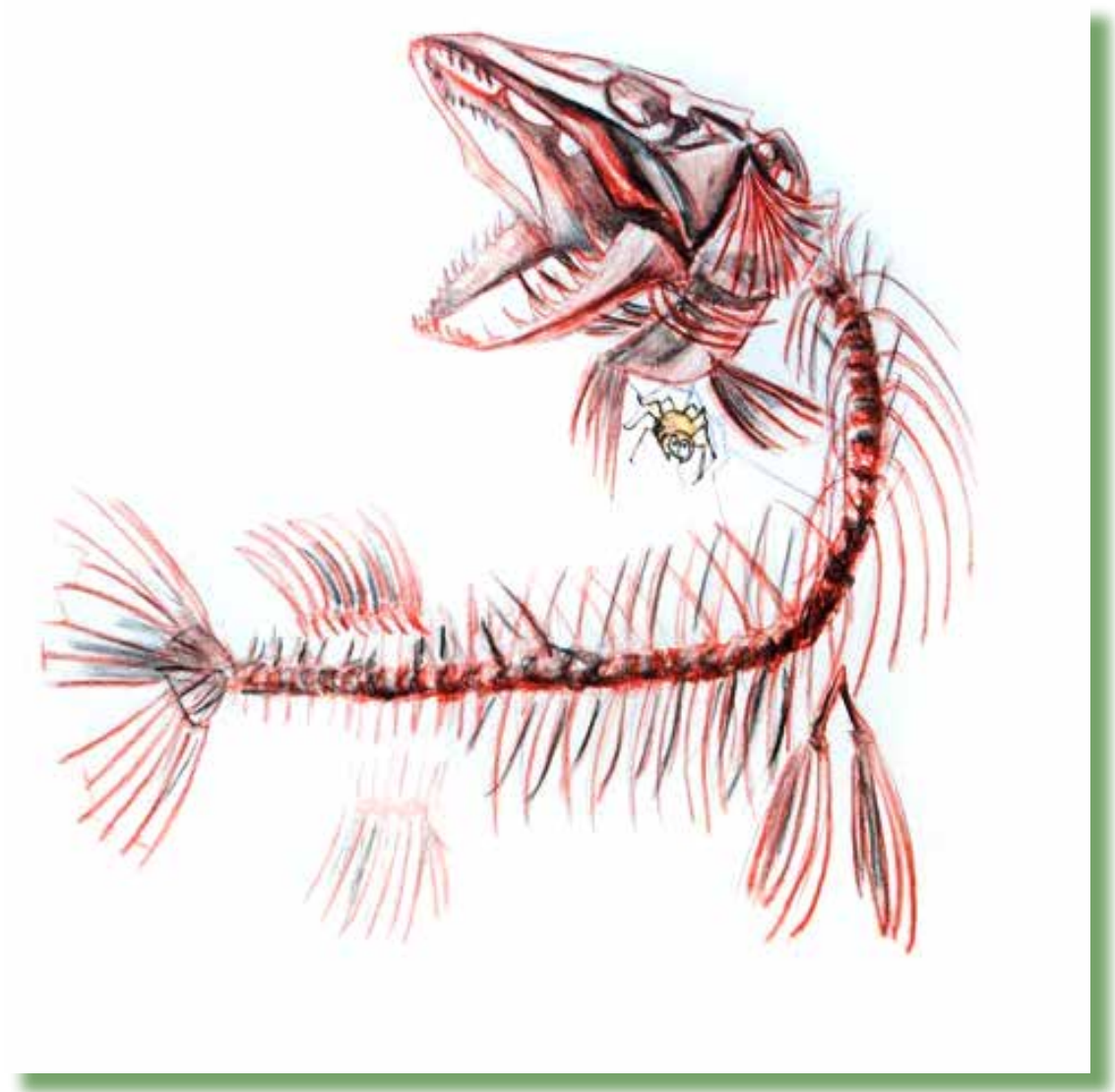
Rosa Mantla Tıjchq Yatı t'à etaewhehtı



Ekw'òò



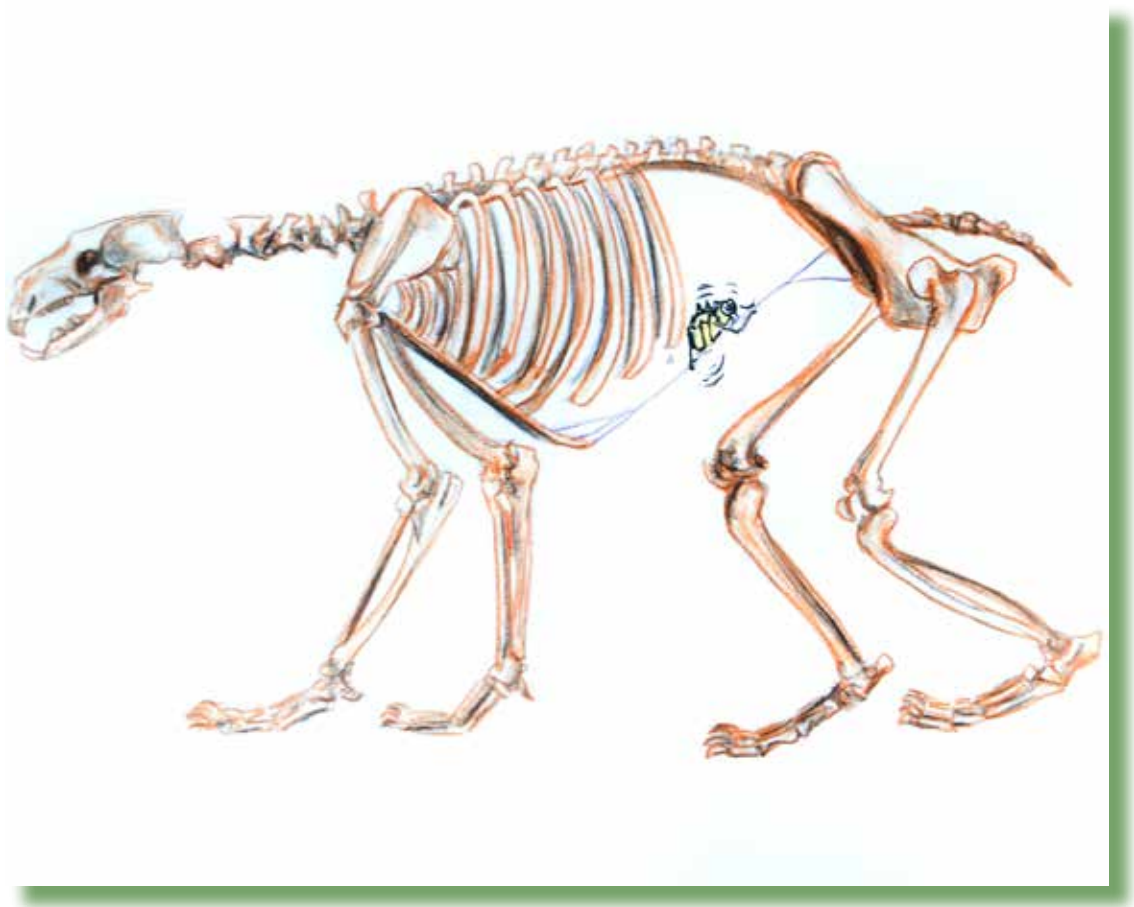
Ayì kw'òò ne?





Dii ʔiwe kw'qò ne.

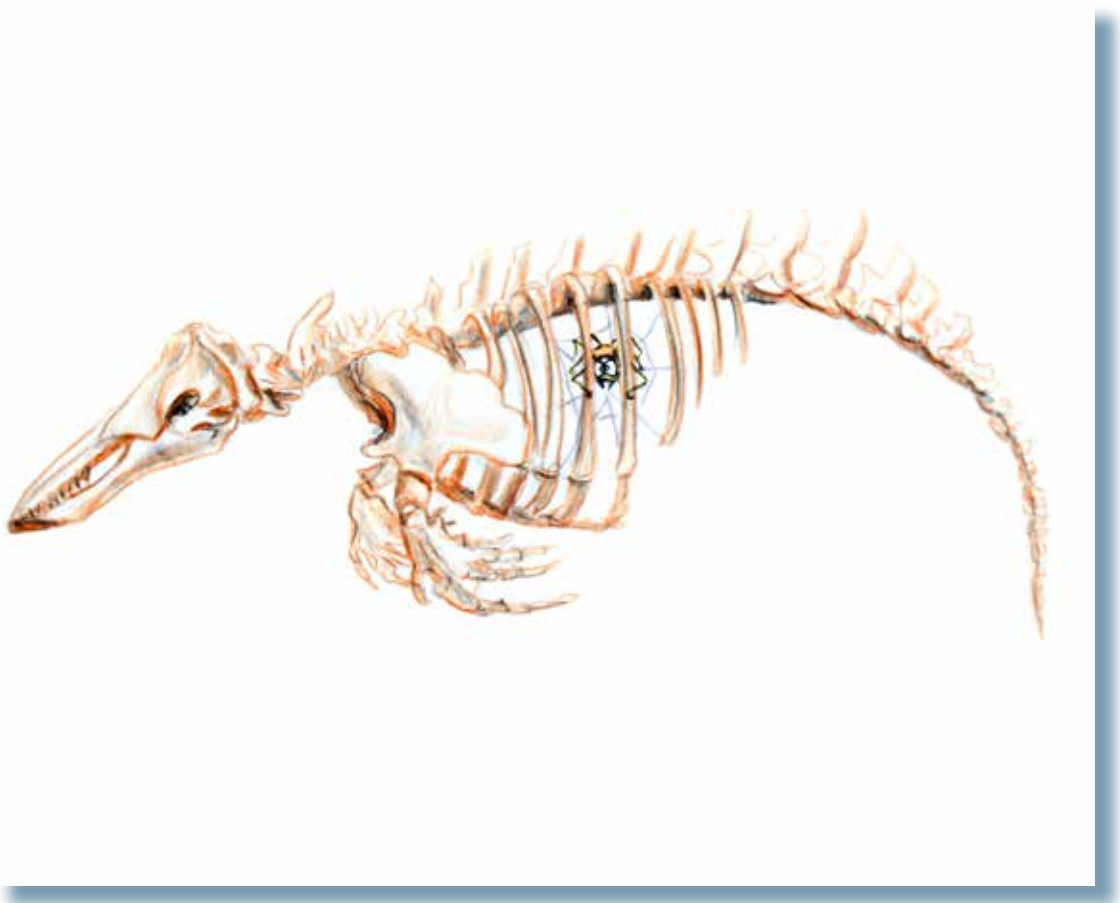
Ayì kw'òò ne?





Dii sahcho degoo
kw'qò ne.

Ayì kw'òò ne?





Dii ɥiwecho kw'qò ne.

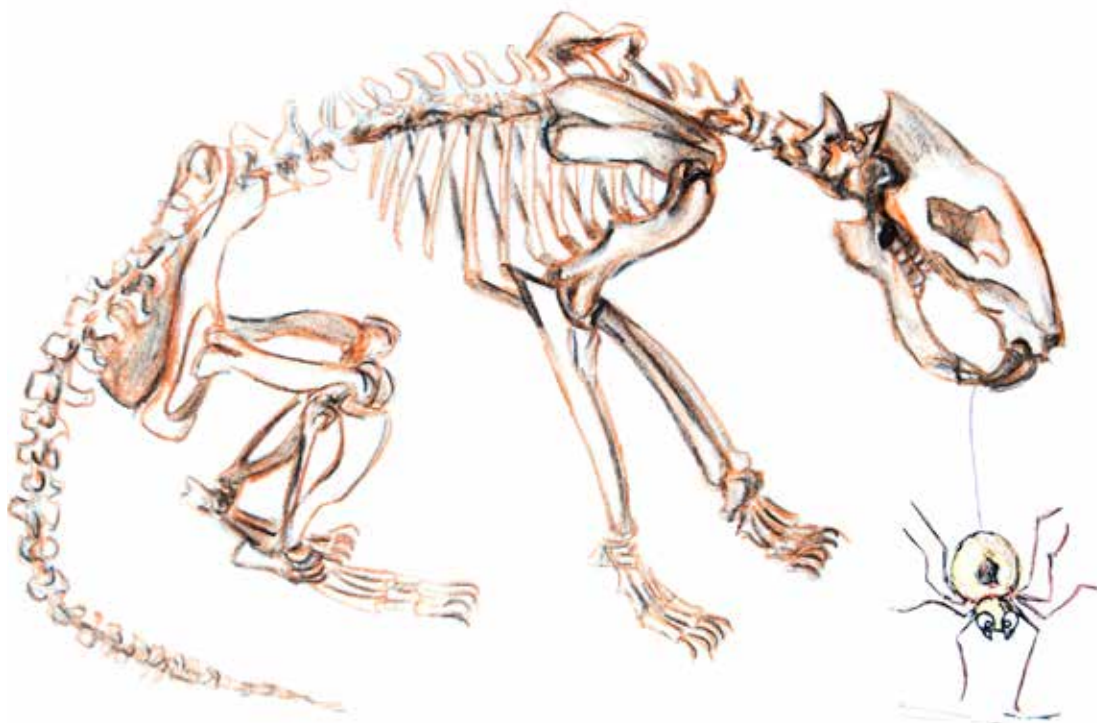
Ayì kw'òò ne?





Dii ekwò kw'òò ne.

Ayì kw'òò ne?





Dii tsà kw'qò ne.

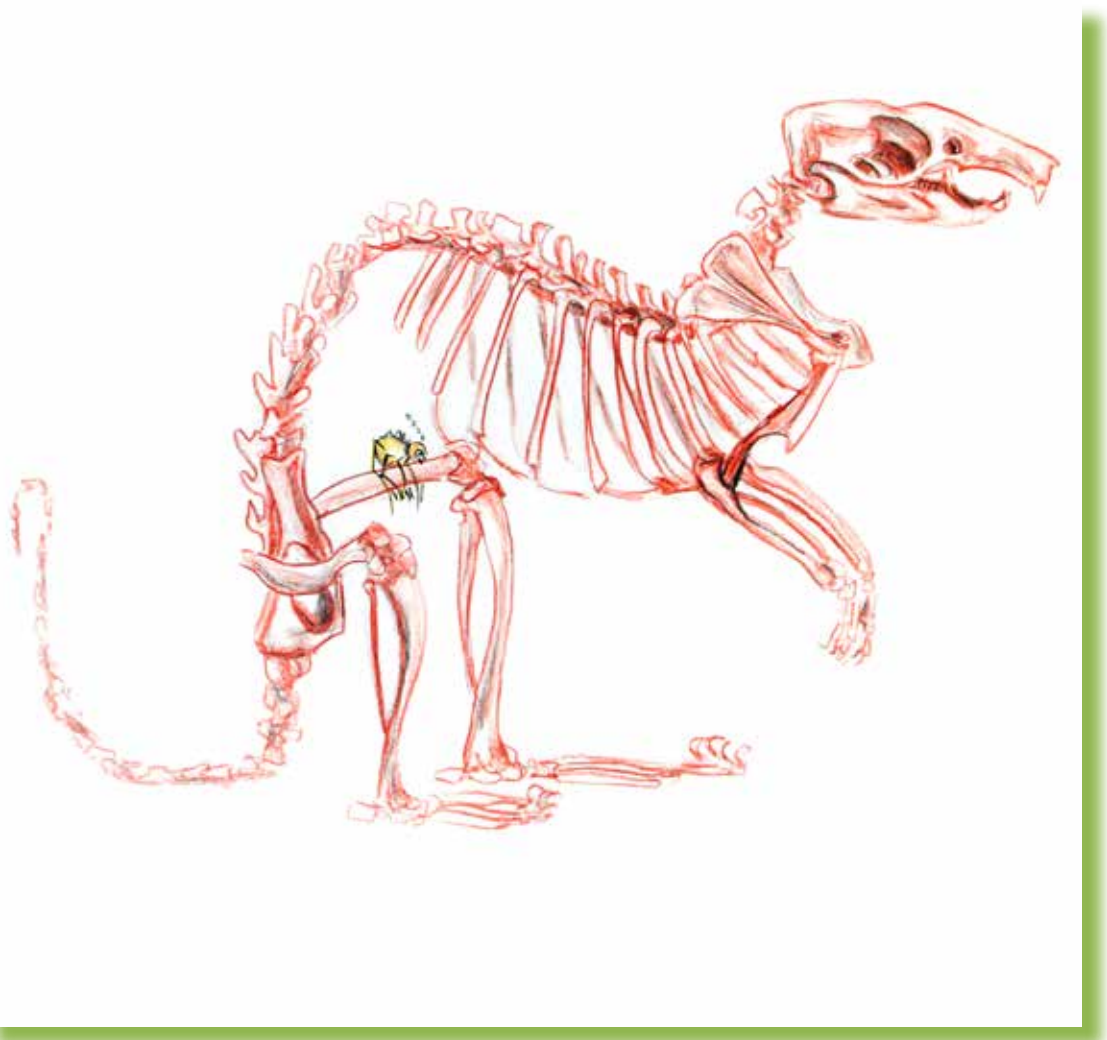
Ayì kw'òò ne?





Dii tatsò kw'òò ne.

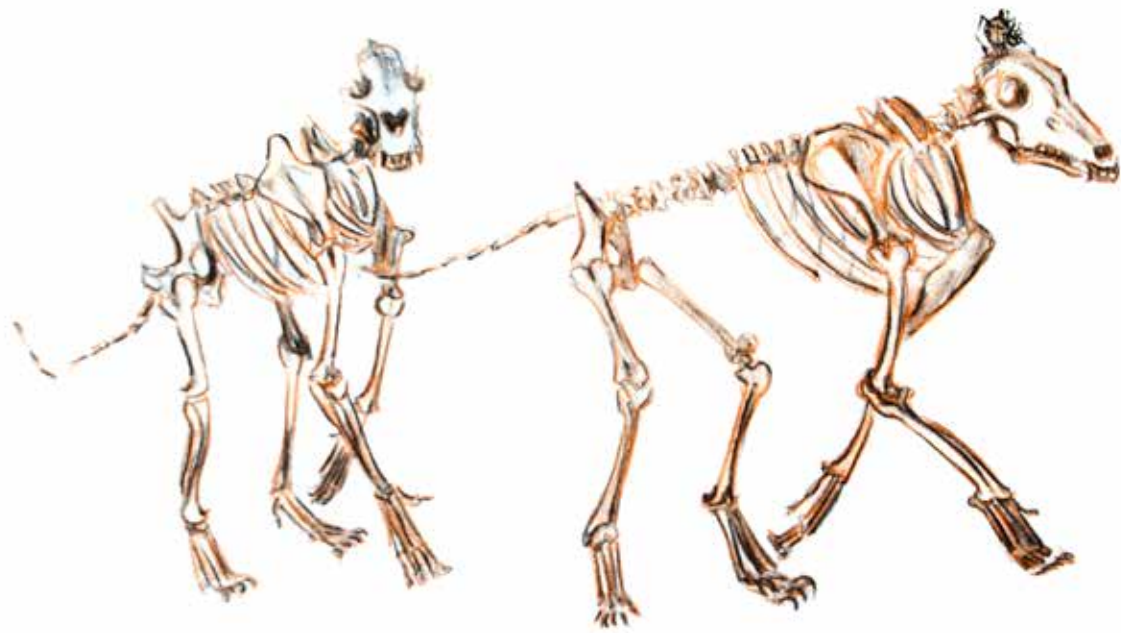
Ayì kw'òò ne?





Dii dl̥ącho kw'q̥ò ne.

Ayì kw'òò ne?





Dii d̀iga kw'q̀q̀ ne.

Ayìi wekw'òò
gòhṭṭ-le?



K'àle ekw'qò wets'q-le.

Ideas:

- For each page ask, (*K'àle ladi*) Encourage the students to use prepositions of place words such as; on, inside, under, beside and body parts such as head, leg.
- An example of a full sentence would be, *The spider is on the vole's leg.*
- Ask students where the animals live. Answers to this question could be, *Fish live in the water.* or *The polar bear lives on the tundra.*
- Ask students which animal is the biggest? Or Which animal is black? Or What does a wolf eat?
- Ask students which animal is their favorite and why. Answers to this question could be, *I like the raven because it talks to me.* OR, *I like to eat caribou.*

All drawings by Jen Walden.
Adapted by Wendy Lahey from the book *Les Squelettes* by Kevin Polsello.
Translations by Rosa Mantla.

Tessa Macintosh photos: spider web, raven
Paul Vesci photo: jackfish
GNWT – ENR photos: polar bear (Be41 Polar Bear –RWED),
beluga (RDecker), caribou (NWT2009-07-23DSC_0494),
vole (RB), wolf (Dean Cluff, Ellsmere,08Jul2010)
Beaver photo: <http://www.flickr.com/photos/31563480@N00/2452702213/>
American Beaver]