

# Tth'an

Gladys Alexi k'iighe'atinnutloo  
Jen Walden k'iighe'gwank'oo altsaih





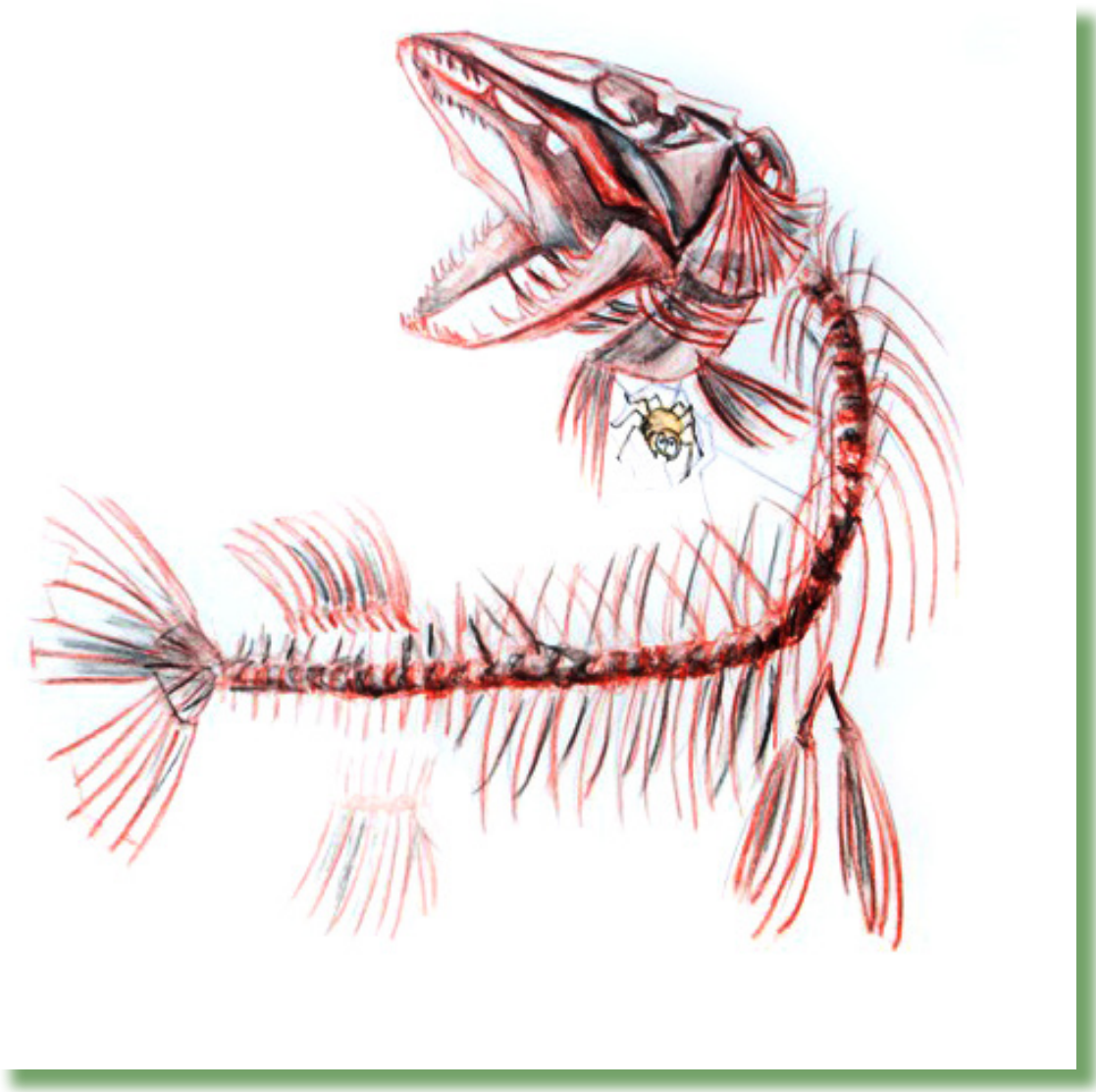
# Tth'an



Government of | Gouvernement des  
Northwest Territories  
Territoires du Nord-Ouest



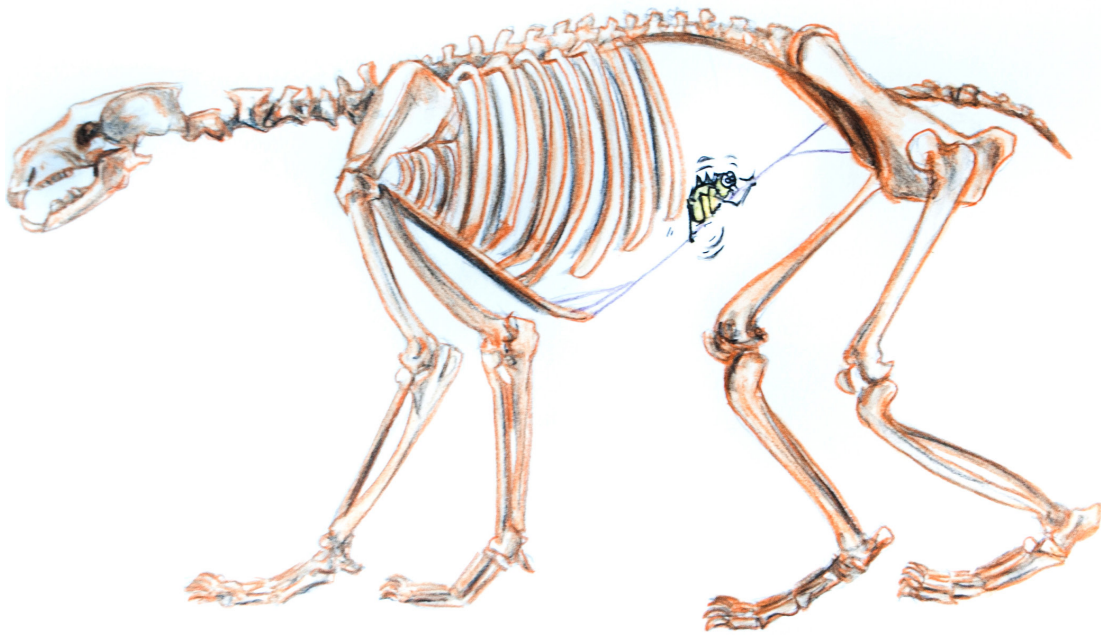
# Jii jidii tth'an diinch'uh?

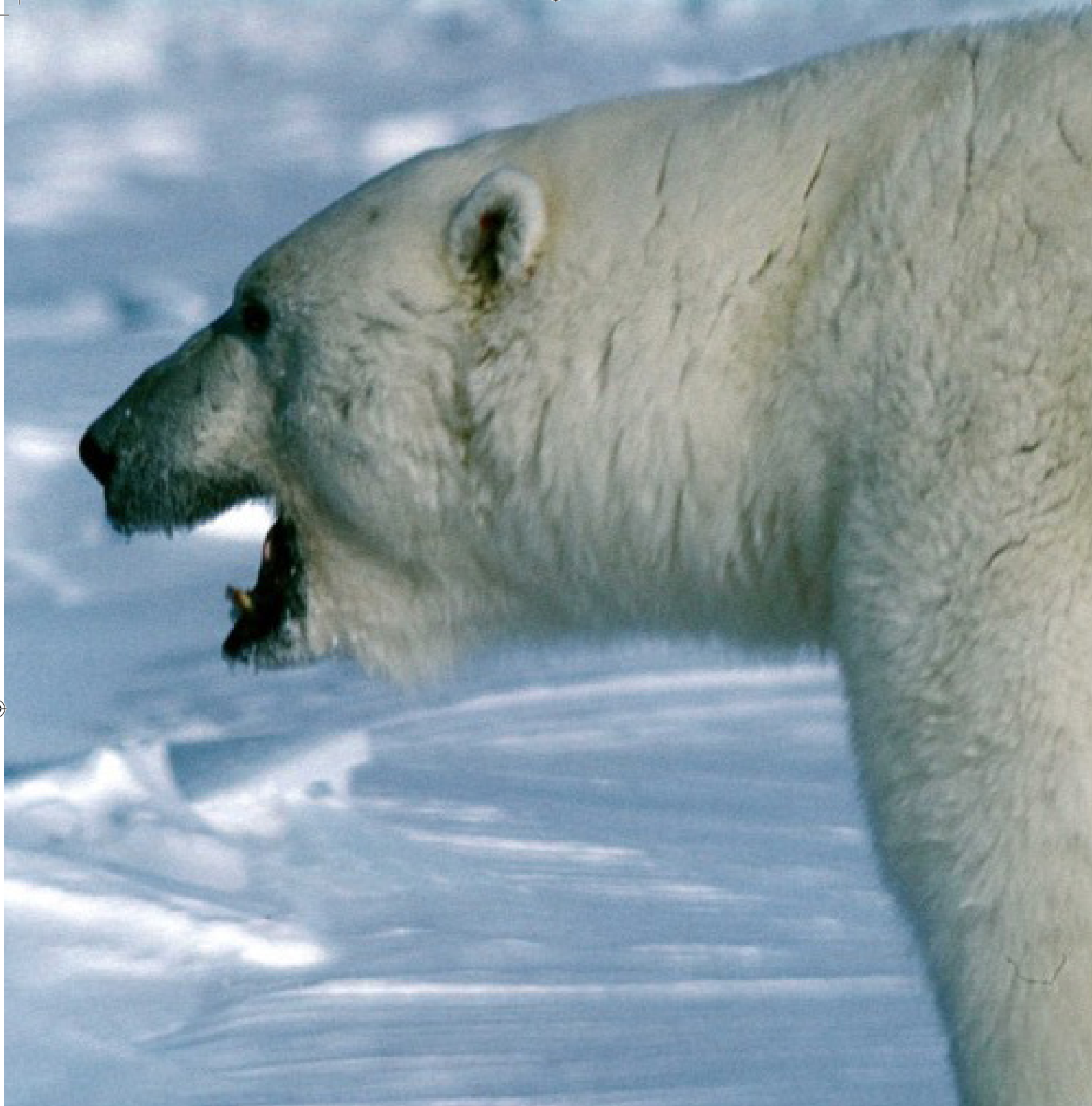




Eltin.

# Jii jidii tth'an diinch'uh?

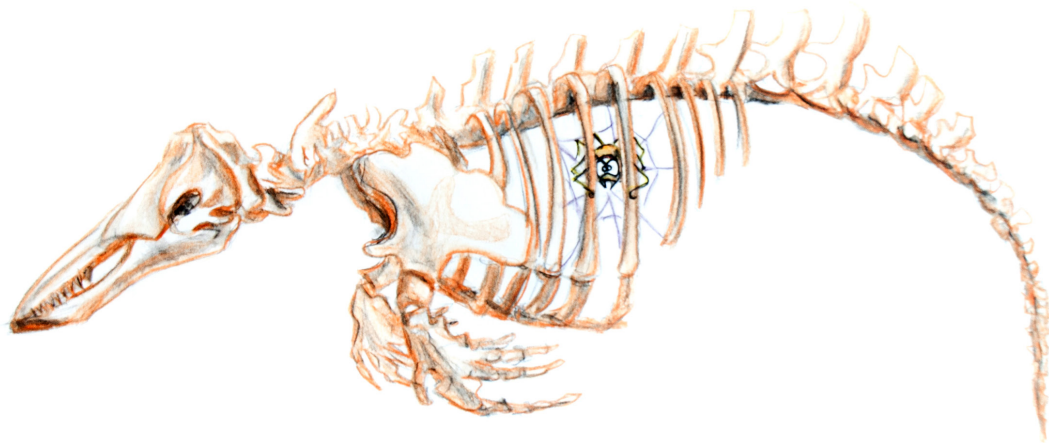




Chezhìi’.



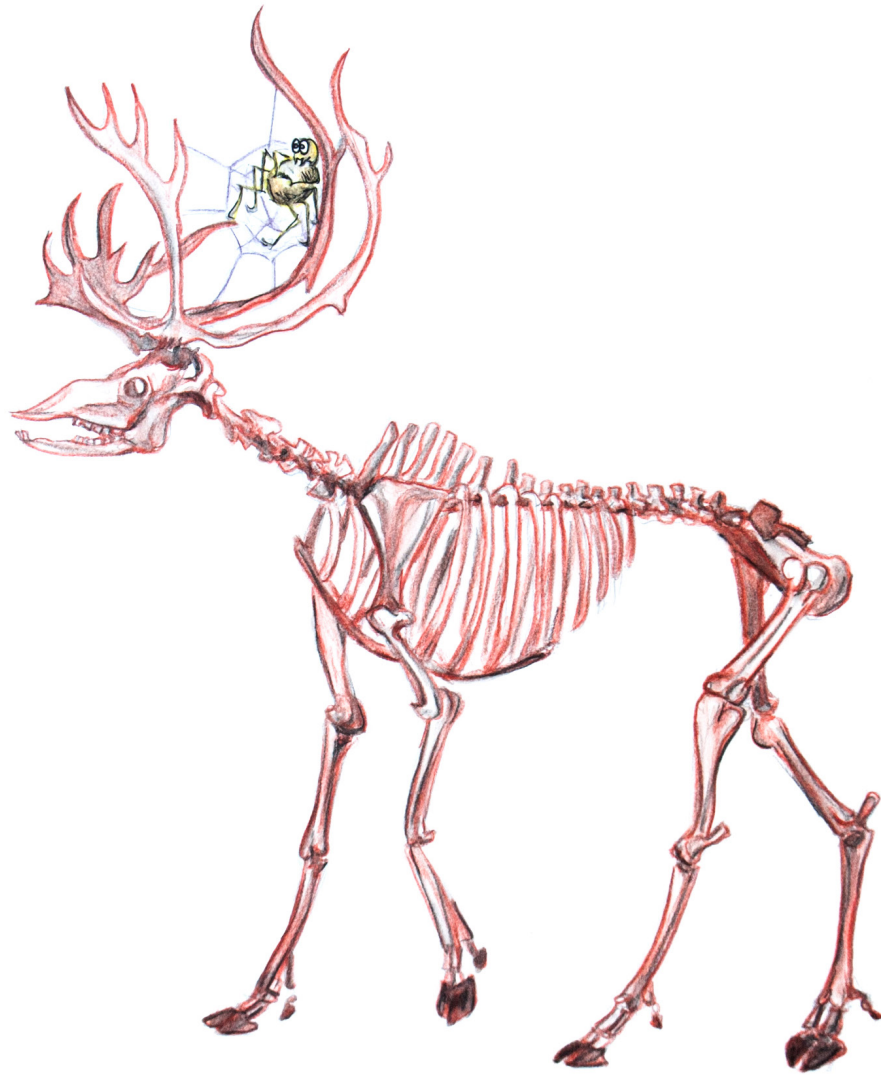
# Jii jidii tth'an diinch'uh?





Kaleeluk.

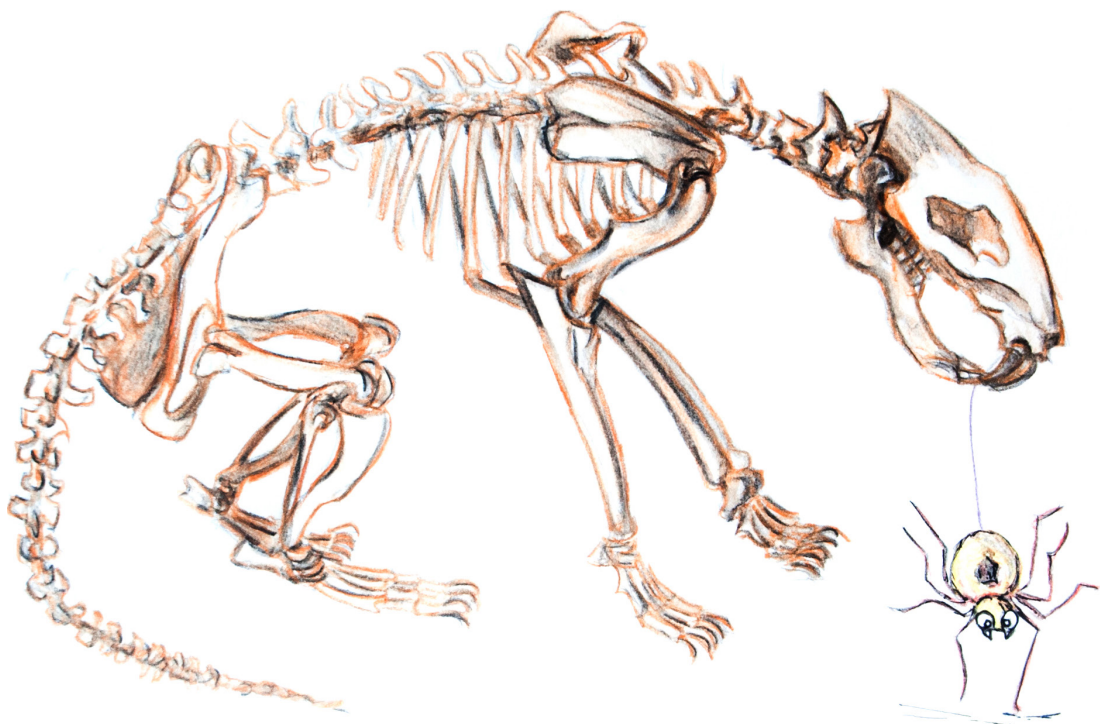
# Jii jidii tth'an diinch'uh?





Vàdzaih.

# Jii jidii tth'an diinch'uh?





Tsèe'.

# Jii jidii tth'an diinch'uh?

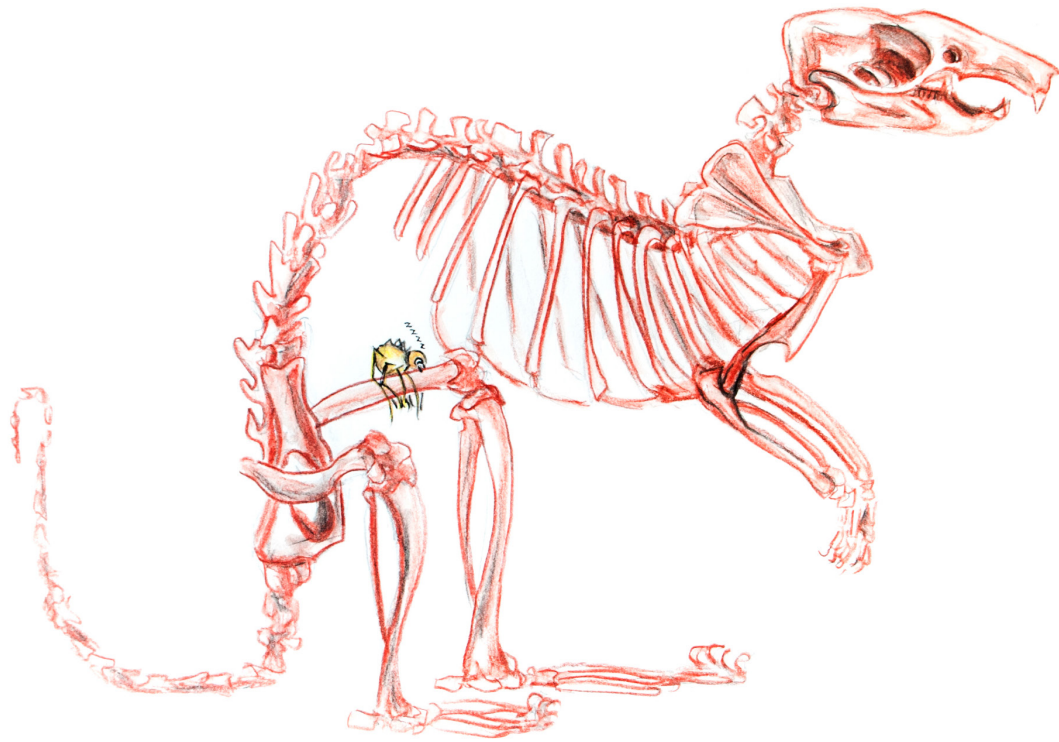




Deetrin'.



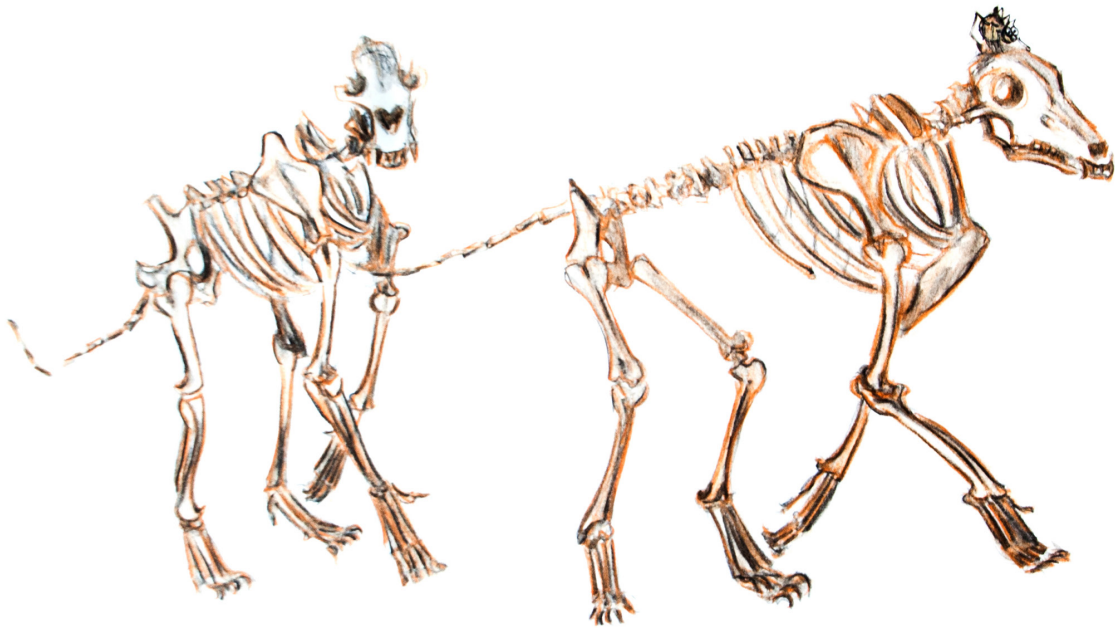
# Jii jidii tth'an diinch'uh?





Daatsoo choo.

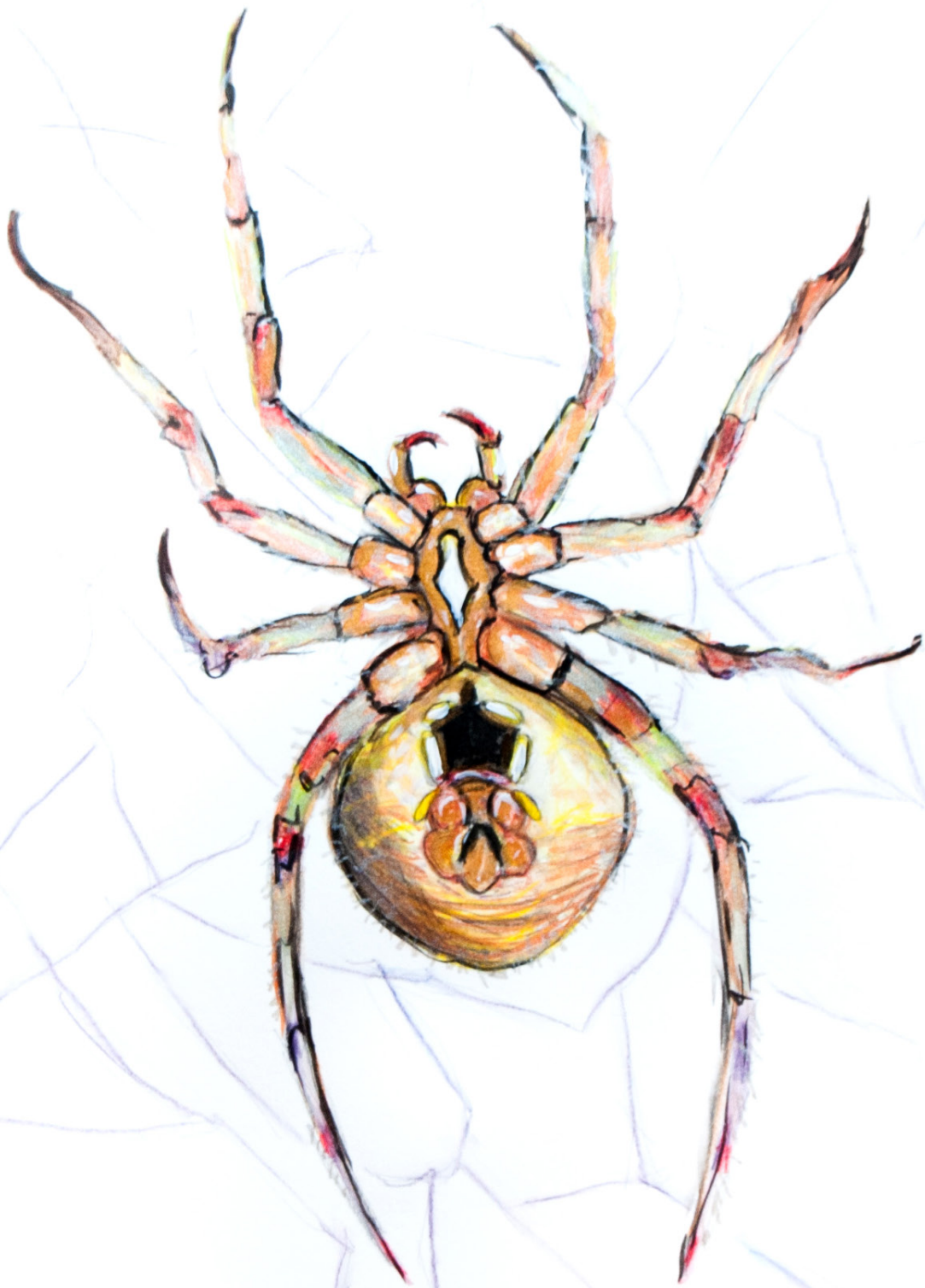
# Jii jidii tth'an diinch'uh?





Zhòh.

Jidii dee tth'an  
di'in kwah?



Gudeedrii.

# Ideas:

- For each page ask, Gudeedrii gweejih? (Where is the spider)? Encourage the students to use placement words such as on, inside, under and body parts such as head, leg. An example of a full sentence would be, *The spider is on the vole's leg*'.
- Ask students where the animals live. Answers to this question could be, Fish live in the water or *Polar bears live on the tundra, on the ice and in the water.*
- Ask students which animal is the biggest or which animal is black or what does a wolf eat.
- Ask students which animal is their favorite and why. Answers to this question could be, *I like the raven because it talks to me* OR, *I like to eat caribou.*

All drawings by Jen Walden.  
Adapted by Wendy Lahey from the book *Les Squelettes* by Kevin Polsello.  
Translations by Gladys Alexie

Tessa Macintosh photos: spider web, raven  
Paul Vesci photo: jackfish  
GNWT – ENR photos: polar bear (Be41 Polar Bear –RWED),  
beluga (RDecker), caribou (NWT2009-07-23DSC\_0494),  
vole (RB), wolf (Dean Cluff, Ellsmere,08Jul2010)  
Beaver photo: <http://www.flickr.com/photos/31563480@N00/2452702213/>  
American Beaver]

Government of | Gouvernement des  
Northwest Territories  
Territoires du Nord-Ouest